



Washington State Department of  
**HEALTH**

THE COMMUNITY  
**COLLABORATIVE**



**Monthly Session May 17**

A small, stylized signature or logo in the bottom right corner of the page.

1. Recording of Presentation Content
2. Questions & Answer Sessions will only be recorded and shared out to Community Collaborative members through notes
3. You will remain anonymous

**Welcome & Housekeeping**

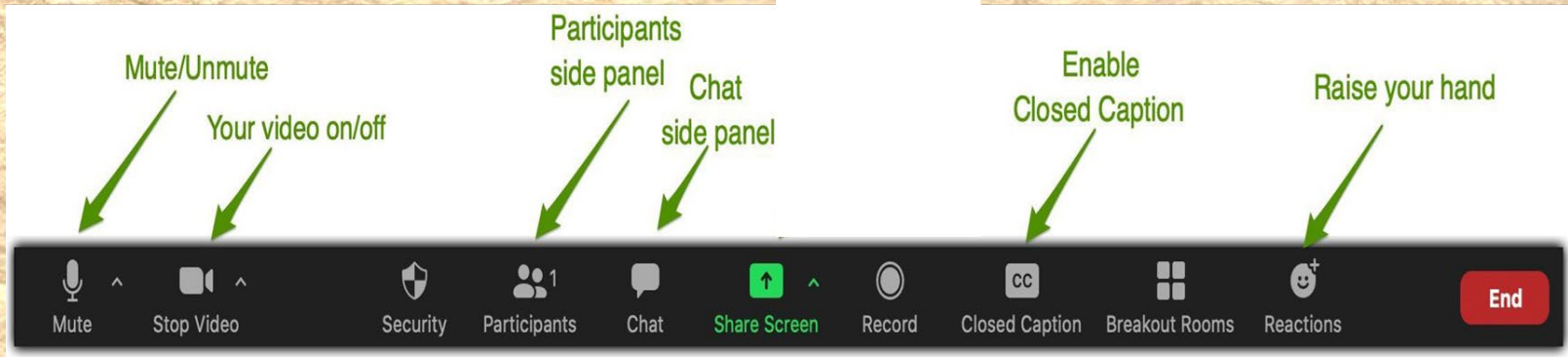
# Captioners - How to display and customize

## Captions/subtitles and view the full transcript

- 1.To view live captions, click on the menu arrow next to the Closed Caption button.
- 2.Choose from showing subtitles, a full transcript, or both.
- 3.You may adjust the size of the captions if you wish.
- 4.You can also Hide Subtitles if you do not want to see the text.

**QUESTIONS  
?**

Please message Temp – Kauffman &  
Associates Inc  
if you have any questions!



Zoom Navigation and Accessibility

Zoom Navigation and Accessibility

# Cyril Walrond



Cyril Walrond is a committed Anti-Racist community organizer and advocate for racial and social justice. As someone that is formerly incarcerated and system impacted Cyril utilizes his lived experience to confront the perpetual harms that exist throughout the criminal legal system, work that includes fighting to remove barriers to successful reintegration for our returning community members. Cyril is the Outreach & Advocacy Manager for the University Beyond Bars and a member of the Black Prisoners Caucus Community Group.

**Thought Partner Facilitator**

The Community Collaborative would like to acknowledge that we are currently living on the traditional territories cared for by the Coast Salish people and other Native peoples who have lived here for many generations and who continue to be systematically erased by policies and practices that remove their histories from this place. We acknowledge and honor the sovereignty of Indigenous peoples in the US continent - American Indians/Native Alaskans, and in the US Island Territories - Native Hawaiians/Pacific Islanders & Atlantic Islanders, over their languages, culture and lands and will collectively labor to center their humanity and their continued struggles for justice, especially in stewarding the health and wellness of their communities.

We also would like to acknowledge that the culture, economic growth, wealth, and foundation of this country has been made possible by the labor of enslaved African peoples and their descendants who suffered the horror of transatlantic trafficking of their people, chattel slavery, Jim Crow, proliferated imprisonment, police brutalities and many other harms we continue to see today through anti-Black culture and policies. We recognize the histories of Washington and the US as complicit with the racist ideology of white supremacy. These difficult histories persist in present-day racial realities privileging Whites, while negatively impacting Black, Indigenous, and other communities of color. It is only by recognizing and understanding histories that were made during our nation's origins resulting in impacts that can be felt and witnessed today, that we can hope to correct our path. We are committed to uplifting the voices, experiences and histories of Indigenous and enslaved people's contributions and stewardship.

# Land & Labor Acknowledgement



# Black Prisoner's Caucus Highlight

A small, stylized signature or logo in the bottom right corner of the page, consisting of a few cursive letters.



# Black Prisoner's Caucus Highlight

A small, stylized signature or logo in the bottom right corner of the page, consisting of a few cursive letters.



3:30 – 3:40 p.m.	Welcome and Introduction	Cyril Walrond, Thought Partner
3:40 – 3:45 p.m.	Community Collaborative Updates	Joseph Seia, ESJ Strategist, DOH
	Monthly Celebrations	
3:40 – 3:55 p.m.	AA & NH/PI Heritage Month Highlight	Lin Crowley, APIC South Puget Sound
3:55 – 4:00 p.m.	Tongan Artist Highlight <a href="#">OSAYS23 Toka Valu FINAL on Vimeo</a>	Toka Valu, Toka Valu LLC
	Agency Briefing	
4:00 – 4:20 p.m.	HEAL Act	Leah Wood, ESJ Consultant, DOH
4:20 – 4:35 p.m.	Care-A-Van Updates	Marie Cartwright, Health Services Consultant, DOH
4:35 – 4:55 p.m.	End of the Federal Covid-19 Public Health Emergency	Elizabeth Perez, Chief, Executive Office of Public Affairs and Equity, DOH

# Session Agenda



Formerly the Vaccine Implementation Collaborative, and envisioned jointly by community leaders and DOH staff in February of 2021, the Community Collaborative is a collective comprising of members who are involved from many different sectors in uplifting communities that have experienced the devastating impacts of COVID-19 through co-designing recovery efforts with the goal of eliminating further harms on Black, Indigenous, communities of color and all those facing harm due to systemic racism & oppression. The Collaborative is now focusing on addressing the structural and social determinants of health disparities.

**Who we are**

- **Community Collaborative Session, 3<sup>rd</sup> Wednesdays**
- **CC Workgroups Updates:**
  - Disabilities-Access Functional Needs**
  - Native Hawaiian/Pacific Islander Health Equity**
  - Carceral Health Equity**
- **Community Thought Partners, 2<sup>nd</sup> & 4th Thursdays**
- **Next Community Collaborative Session set for July 19**

**Collaborative Updates**

Asian American  
Native Hawaiian  
Pacific Islander  
Heritage Month



**AA & NH/PI Month**



**AA Highlight - APIC South Puget Sound**

Celebrate with the Asian Pacific Islander Coalition  
of South Puget Sound & the City of Olympia

# AANHPI HERITAGE CELEBRATION

May 20, 2023 at 11am-4pm

Vendor & Performer  
Application OPEN NOW!

Apply by April 17th: [www.surveymonkey.com/r/SDYVJH8](https://www.surveymonkey.com/r/SDYVJH8)



# APIC – South Puget Sound



# NH/PI Community Highlight



# Agency Briefing







**Leah Wood** (she/her)

Equity and Environmental Justice Consultant  
Environmental Public Health Division  
Washington State Department of Health

[Leah.Wood@doh.wa.gov](mailto:Leah.Wood@doh.wa.gov)

360-913-2580



# ENVIRONMENTAL JUSTICE AND THE HEAL ACT

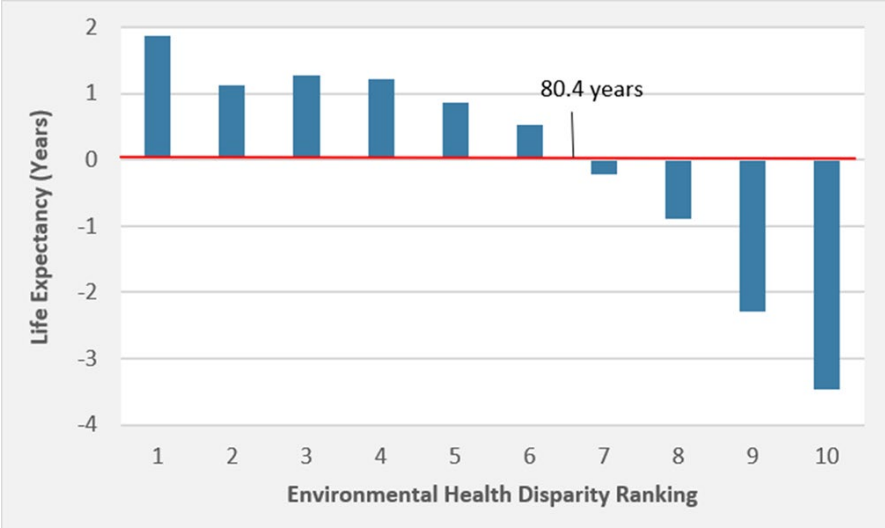
Leah Wood (she/her)  
*Equity and Environmental Justice Consultant*  
Washington State Department of Health



# ENVIRONMENTAL HEALTH DISPARITIES

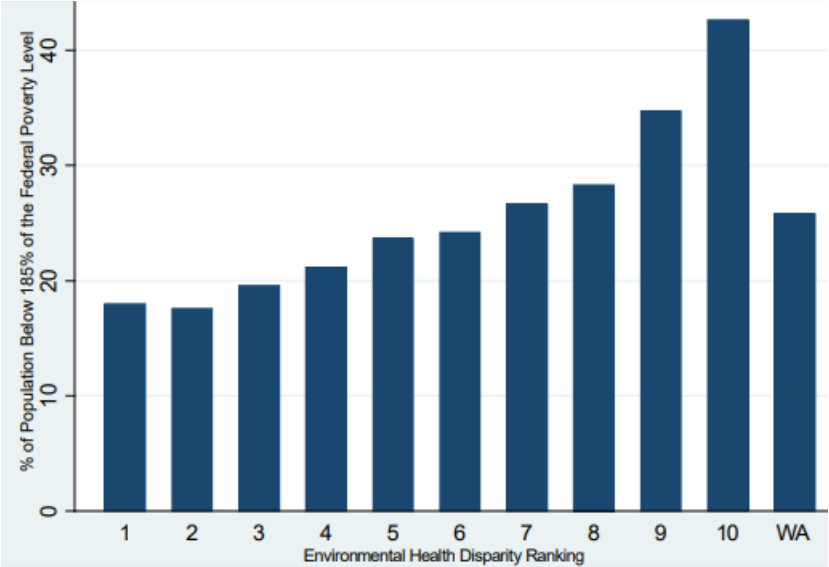


- In WA, there is an over five-year life expectancy gap between census tracts most impacted by environmental hazards and those least impacted.
- The EHD map does not include tribal data

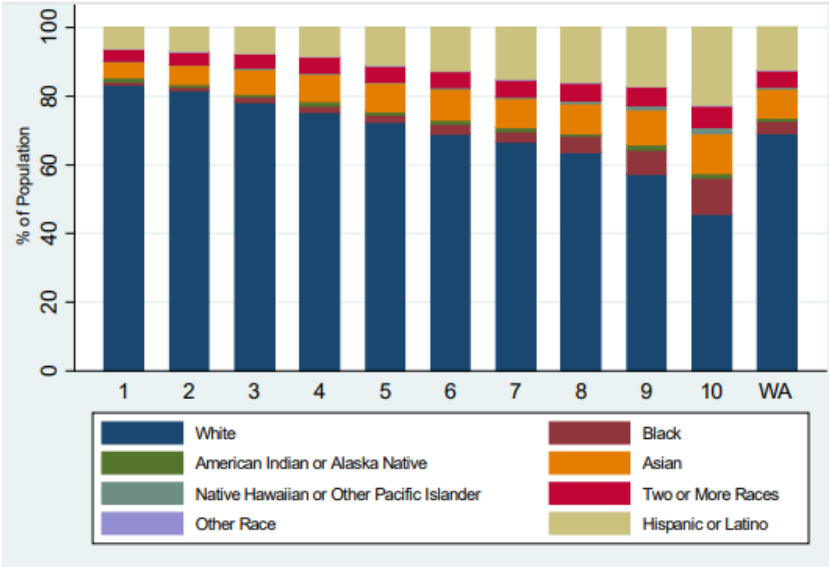


# ENVIRONMENTAL HEALTH DISPARITIES

Poverty by Environmental Health Disparity Ranking



Race/Ethnicity by Environmental Health Disparity Ranking



Please note: these charts were made using data from EHD Map v1.0 and does not represent data updates in v2.0

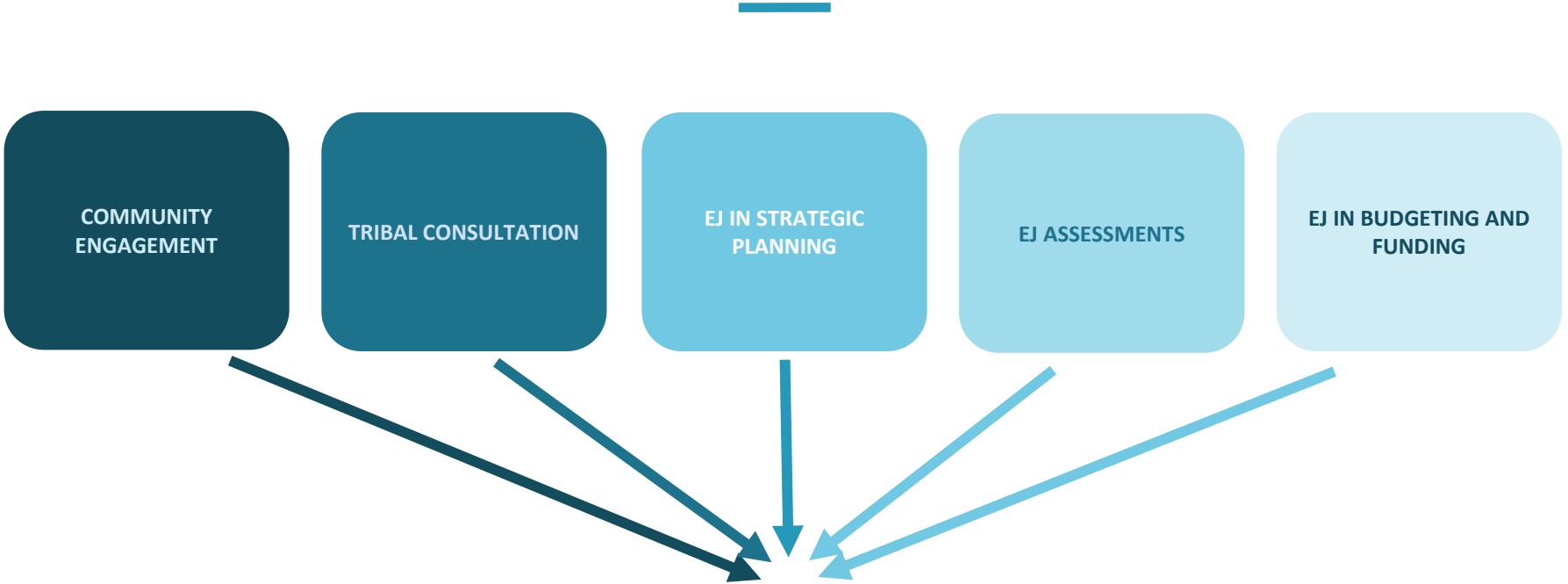
## WHAT IS ENVIRONMENTAL JUSTICE?

---

The Healthy Environment for All (HEAL) Act defines environmental justice as “**the fair treatment and meaningful involvement of all people** regardless of race, color, national origin, or income with respect to the development, implementation, and enforcement of environmental laws, rules, and policies.

Environmental justice includes **addressing disproportionate environmental health impacts** in all laws, rules, and policies with environmental impacts by **prioritizing vulnerable populations and overburdened communities, the equitable distribution of resources and benefits,** and **eliminating harm.**”

STATE AGENCY IMPLEMENTATION OF THE HEAL ACT



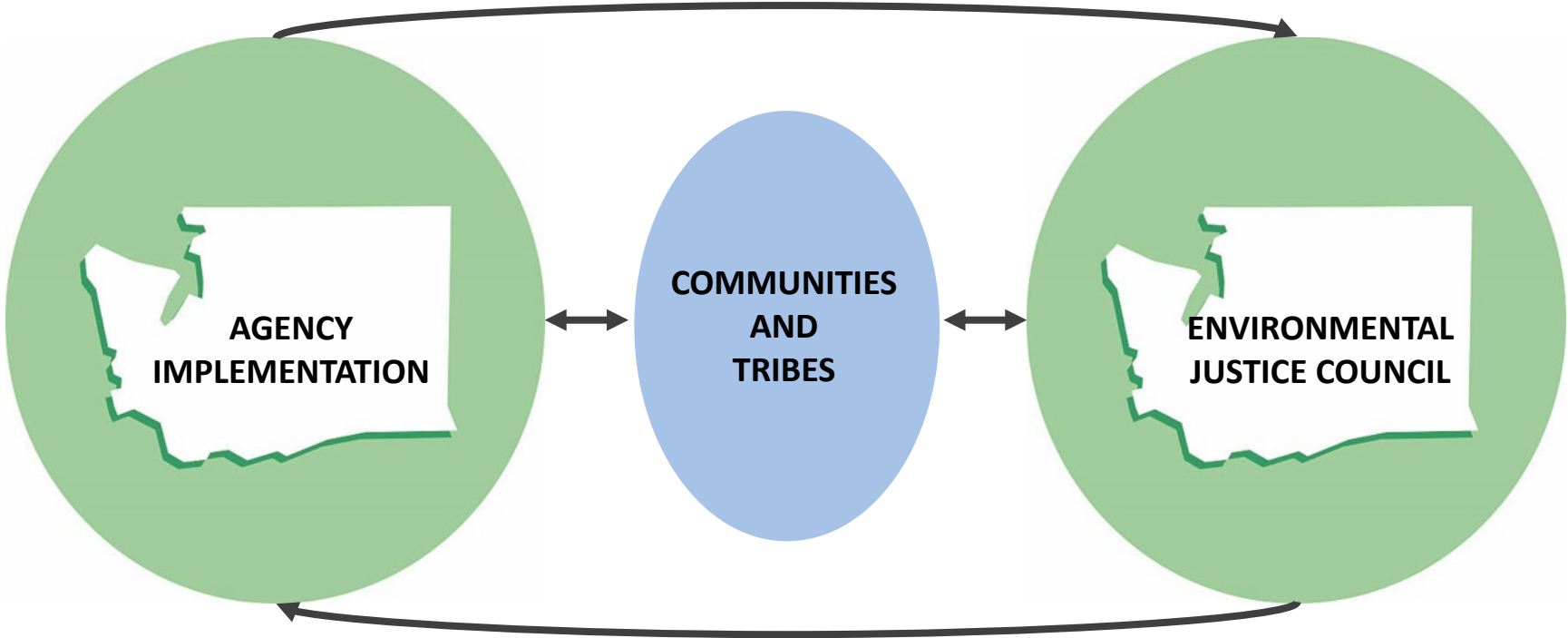
**TRANSFORMATION OF AGENCY CULTURE, POLICY, AND PRACTICE**

IMPLEMENTING AGENCIES





HEAL ACT IMPLEMENTATION



ENVIRONMENTAL JUSTICE COUNCIL

---

**TRIBES** – Four representatives

**COMMUNITY** – Seven representatives, including one youth representative

**EJ PRACTITIONERS** – Two representatives

**BUILDING/CONSTRUCTION TRADE UNION** – One representative

**AT-LARGE** – One representative

**HEAL AGENCIES** – Seven non-voting representatives

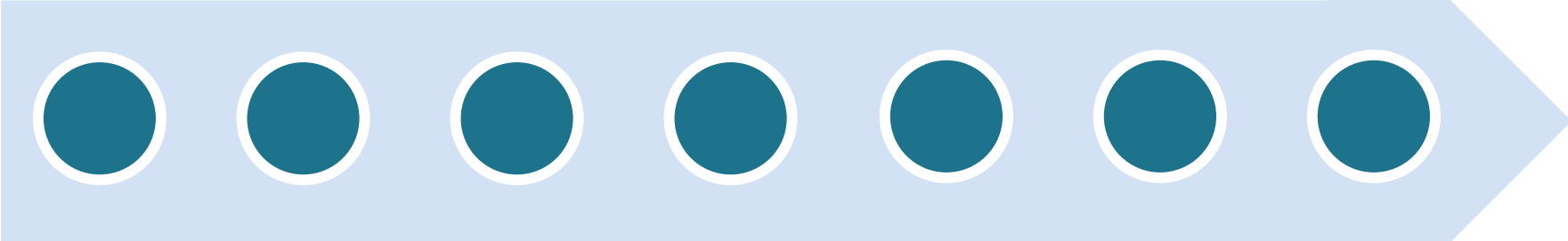
# HEAL Implementation



**July 1st, 2022**  
Community Engagement  
Plans due

**July 1st, 2023**  
EJ Assessments begin on  
initial significant agency actions

**Annually, starting 2024**  
Agencies publish dashboards  
describing progress



**Jan 1st, 2023**  
Strategic planning  
obligation due

**July 1st, 2023**  
Budgeting and funding  
obligation due

**Biennially, starting Dec 2023**  
EJ Council evaluates agency  
implementation

**July 1st, 2025**  
EJ Assessments begin on  
additional significant agency  
actions identified by agencies

# RIPPLE EFFECTS OF THE HEAL ACT

---



HEAL is driving transformation at state agencies – part of a larger ecosystem of initiatives centering equity, meaningful community engagement and environmental justice



HEAL is already influencing other policies – an example is the Climate Commitment Act

Learn More



- [Environmental Justice Council](#)
- [DOH Environmental Justice and HEAL Act Webpage](#)



**Leah Wood (she/her)**

*Equity and Environmental Justice Consultant*

Environmental Public Health

Leah.Wood@doh.wa.gov

360-913-2580



@WADeptHealth

# Questions & Answer Session



# Care Van

*Caravana de Salud*

**HEALTH IN MOTION**



CARE-A-VAN

Community Relations and Equity



## Care-a-Van has added services.

- Childhood vaccinations are being piloted at Care-a-Van clinics for children ages 18 months through 17 years.
- Though this is not being widely publicized yet, any organization can put in a request for childhood vaccines at:

<https://tinyurl.com/4urna4nc>



## Care-a-Van services now include:

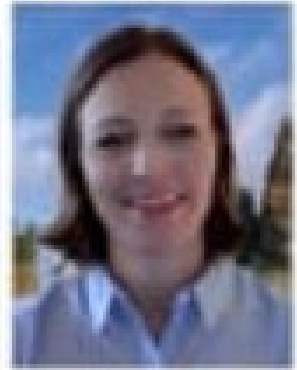
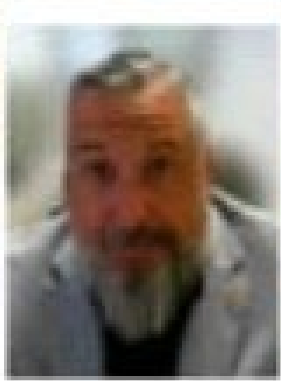
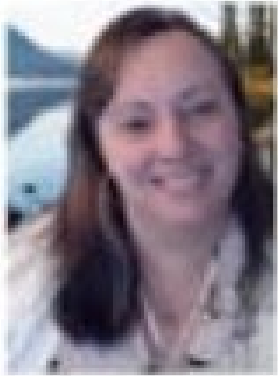
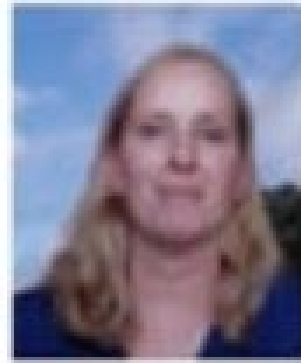
- COVID-19 vaccinations
- Mpox vaccinations
- Flu vaccines through June and then again in the fall
- Blood pressure and blood glucose screenings
- Childhood vaccines listed at right



DTaP-IPV-Hib-HepB
DTaP-IPV
HepA
HepB
Hib
HPV9
IPV
MenACWY-TT
Pneumococcal (PCV13)
Tdap
varicella
MMR

# Questions & Answer Session





**Covid-19 PHE Ending**

A small, stylized signature or logo in the bottom right corner of the page, consisting of a few cursive letters.

# Questions & Answer Session





**Joseph Seia, Equity & Social Justice Strategist  
Center of Community Relations & Equity**

**Email: [joseph.seia@doh.wa.gov](mailto:joseph.seia@doh.wa.gov)**

**Collaborative email: [community.collaborative@doh.wa.gov](mailto:community.collaborative@doh.wa.gov)**

**For More Information**