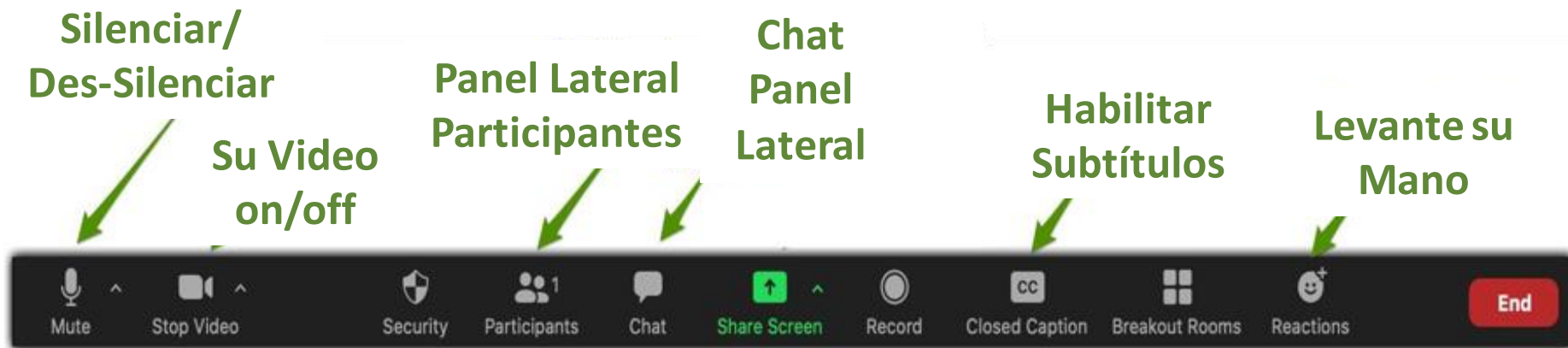


THE COMMUNITY **COLLABORATIVE**



MAY 15, 2024

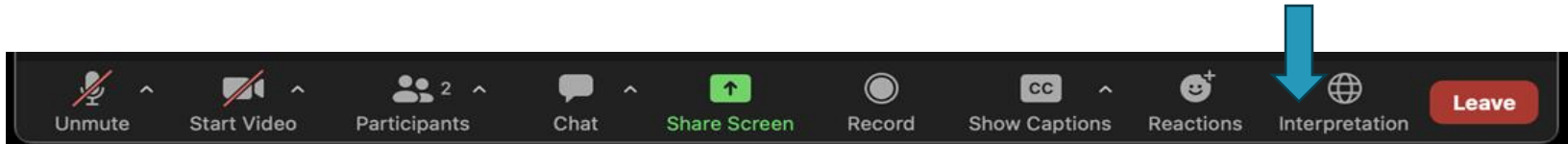
Navegación y Accesibilidad



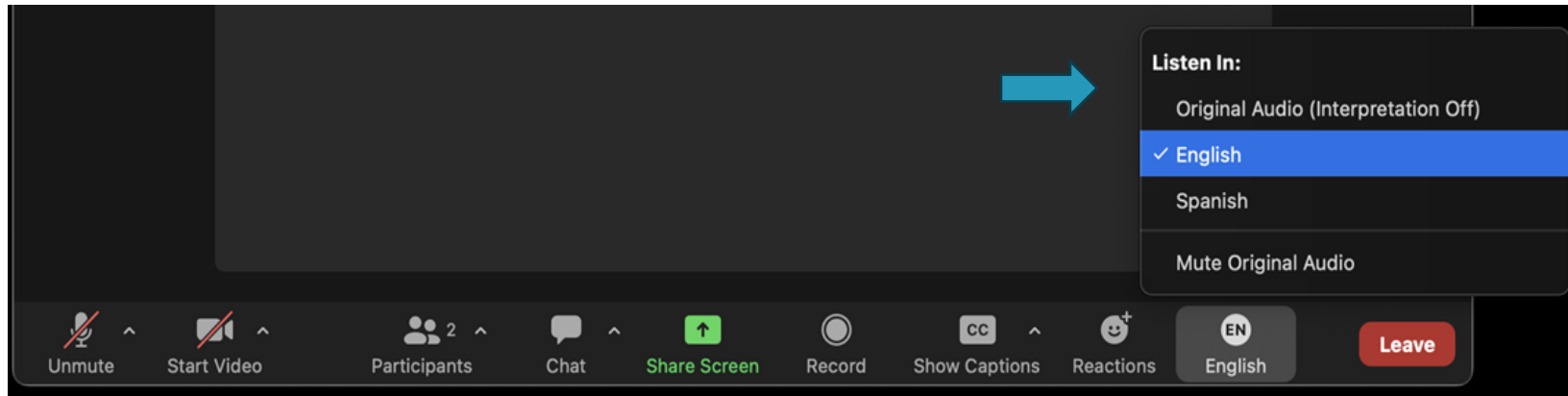
- Chat “Tom Dineen, KAI” con preguntas

Interpretación de Idiomas

Seleccionar Interpretación



Elige Inglés, Español or Otro



THE COMMUNITY **COLLABORATIVE**



WELCOME & LAND
ACKNOWLEDGEMENT

Land & Labor Acknowledgement Part 1

The Community Collaborative would like to acknowledge that we are currently living on the traditional territories of Coast Salish people and other Native peoples who have lived here for many generations and who continue to be systematically erased by policies and practices that remove their histories from this place.

We acknowledge and honor the sovereignty of Indigenous peoples in the North America and in the Island Territories of the United States over their languages, cultures and lands.

We will collectively labor to center Indigenous humanity and their continued struggles for justice in stewarding the health and wellness of their communities.

Land & Labor Acknowledgement Part 2

We also acknowledge this country has been made possible by the labor of enslaved African peoples and their descendants who suffered the horror of trafficking, slavery, Jim Crow, imprisonment, police brutalities and many other harms we continue to see today through anti-Black sentiment.

We recognize the history of Washington state as complicit with the racist ideology of White supremacy. This persists in present-day racial realities privileging Whites while oppressing BIPOC communities.

We are committed to uplifting the voices, experiences, histories, and contributions of Indigenous and descendants of enslaved peoples.

Reconocimiento de Tierra y Trabajo Parte 1

La Community Collaborative quisiera reconocer que actualmente vivimos en los territorios tradicionales del pueblo Coast Salish y otros pueblos nativos que han vivido aquí durante muchas generaciones y que continúan siendo borrados sistemáticamente por políticas y prácticas que eliminan sus historias de este lugar. Reconocemos y honramos la soberanía de los pueblos indígenas en el continente estadounidense y en los territorios insulares de EE. UU. sobre sus idiomas, culturas y tierras y trabajaremos colectivamente para centrar la humanidad indígena y sus continuas luchas por la justicia en la administración de la salud y el bienestar de sus comunidades.

Reconocimiento de Tierra y Trabajo Parte 2

También reconocemos que este país ha sido posible gracias al trabajo de los pueblos africanos esclavizados y sus descendientes que sufrieron el horror de la trata, la esclavitud, Jim Crow, el encarcelamiento, la brutalidad policial y muchos otros daños que seguimos viendo hoy a través del sentimiento anti-negro.

Reconocemos que la historia del estado de Washington es cómplice de la ideología racista de la supremacía blanca. Esto persiste en las realidades raciales actuales que privilegian a los blancos mientras oprimen a las comunidades BIPOC.

Estamos comprometidos a elevar las voces, experiencias, historias y contribuciones de los indígenas y descendientes de pueblos esclavizados.

Agenda // Orden del Dia

3:30 – 3:40	Welcome, Land Acknowledgement	Bienvenidos, Reconocimiento de Tierra y Trabajo
3:40 – 4:05	Community Collaborative Thought Partner Updates	Actualizaciones de Comunidad Colaborativa Socios Reflexivos
4:05 – 4:40	Community Engagement with Legislative and Budget Processes	Participación Comunitaria en Procesos Legislativos y Presupuestarios
4:40 – 4:55	Call for Community Proposals WA State Public Health Assn	Convocatoria de Propuestas Comunitarias – Asociación de Salud Pública del Estado de Washington
4:55 – 5:00	Community Updates and Closing	Actualizaciones de la comunidad y clausura



Community Collaborative Thought Partner Updates

Actualizaciones de
Comunidad Colaborativa y
Socios Reflexivos

Next Meeting: **June 26, 3:30-5:00pm**
 August 7, 3:30-5:00pm



Healthier Washington Collaboration Portal
A resource for the state's health and wellness professionals

[https://waportal.org/partners/
community-collaborative](https://waportal.org/partners/community-collaborative)



Collaborative Purpose

Ensure an equity and social justice lens is applied in the Department of Health's (DOH) planning and decision-making

Garantizar que se aplique una perspectiva de equidad y justicia social en la planeación y toma de decisiones del Departamento de Salud (DOH).

Thought Partner Retreat



Washington State

Poll Question

If you are interested in any of these please fill in the poll:

1. Helping plan future Community Collaborative meetings
2. Moderating a Community Collaborative meeting
3. Presenting on your work in community
4. All of the above

Please include name and email and which of these you are most interested in.



Legislative Updates

Actualizaciones Legislativas

Three Ways Community Can Engage with WA DOH Legislative Process

1. Bring policy requests identified by community
2. Provide feedback on WA DOH requests
3. Engage in the rulemaking process to implement legislation that is signed

Afghan Health Initiative

EBLL Program



Prevent Childhood Lead Poisoning

Exposure to lead can seriously harm a child's health.



Damage to the brain
and nervous system



Slowed growth
and development



Learning and
behavior problems

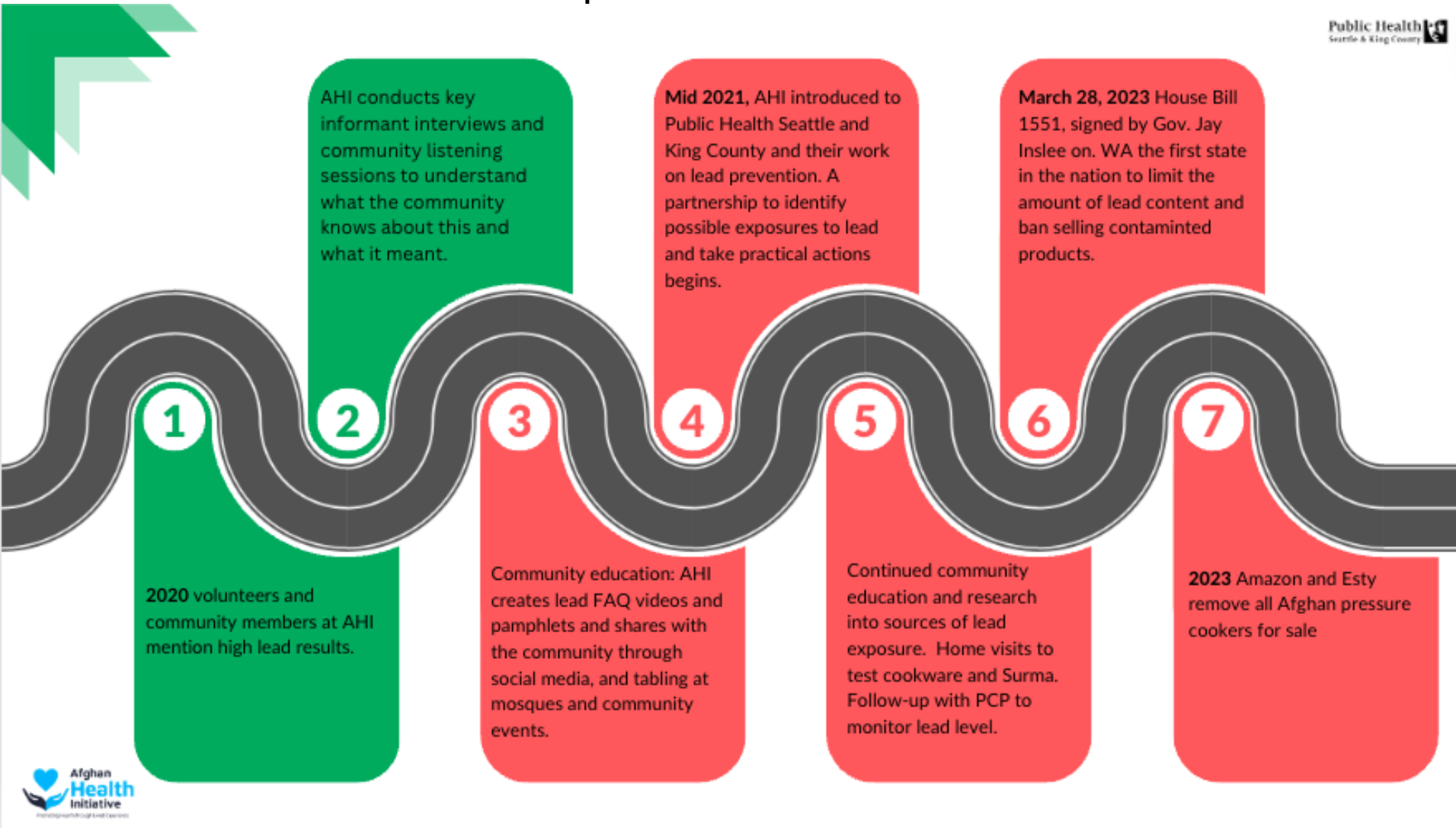


Hearing and
speech problems

High blood lead level among Afghan families in King County

- King County, Washington is home to a large and diverse refugee community.
- Lead poisoning impacts refugee and other newcomer (children and women) resettled in the United States.
- Refugees receive a health screening upon arrival.
- All children ages 6 months and above and breastfeeding/pregnant moms receive testing for elevated blood lead levels at the health screening examination.
- Screening results in 2018-2020 show newly arrived refugee children have blood lead levels (BLLs) above the Centers for Disease Control and Prevention (CDC) blood lead reference value of 5 micrograms per deciliter ($\mu\text{g}/\text{dL}$).
- Children from Afghanistan, who are a top arrival group to King County, are the most disproportionately impacted with 36 percent of children found to have EBLLs.
- There is no safe blood lead level (BLL) in children, and even at low levels, lead can impact a child's learning, growth, and behavior.

LEAD roadmap: From community feedback to State-passed law





Potential Source of lead among Afghan families



Lessons' learned:

- Even though EBLL program has been here in the King County since 2014, the overall understanding about the danger of lead and the potential source of lead is really low.
- Even families that are educated are sometimes unaware or undereducated about lead. It highlights the need for more education about lead and its danger.
- Due to religious believes, most RIM community uses Surma as they believe Prophet Mohammad encouraged it. We might probably include Imams and religious leaders to convince people about the danger of Surma's that contain lead.
- Traditional pressure cookers are still popular among Afghan community. The education about danger of cookware that may contain lead should increase; specially among Afghan women who are the "king of their kitchens"



Thank you for
your attention.



Three Ways Community Can Engage with WA DOH Legislative Process

1. Bring policy requests identified by community
2. Provide feedback on WA DOH requests
3. Engage in the rulemaking process to implement legislation that is signed

WA DOH 2025 PROPOSAL PROCESS

- **July-Sept 2023**
Initial proposals developed
- **Oct 2023 – April 2024**
Initial prioritization of 2025 proposals
- **June 26 2024**
Potential community input session
- **Sept 2024**
Proposals (“Decision Packages”) submitted to Office of Fiscal Management (OFM) and Governor’s Office

We Are Here

Inform proposal development



Potential DOH Proposals in Current Budget Cycle

Community Engagement in Health

- Funding Community-Based Organizations & Engagement
- Community-led Health Equity Zones

Health Education

- Be Well Washington
- Watch Me Grow Washington Expansion
- Encourage food entrepreneurship

Health Access

- Adult Vaccine Program

Workforce

- Expand the behavioral health workforce
- Community Health Worker Training
- Continue support to Birth Equity Project

Response

- Prevention and response to communicable diseases in schools and correctional facilities
- Expand homelessness response

[See additional details on WaPortal](#)



Poll: How interested are you in engaging in legislative and budget-making processes?

How do community members want to engage in this process?

Are there specific proposals you want to discuss in a Collaborative meeting?

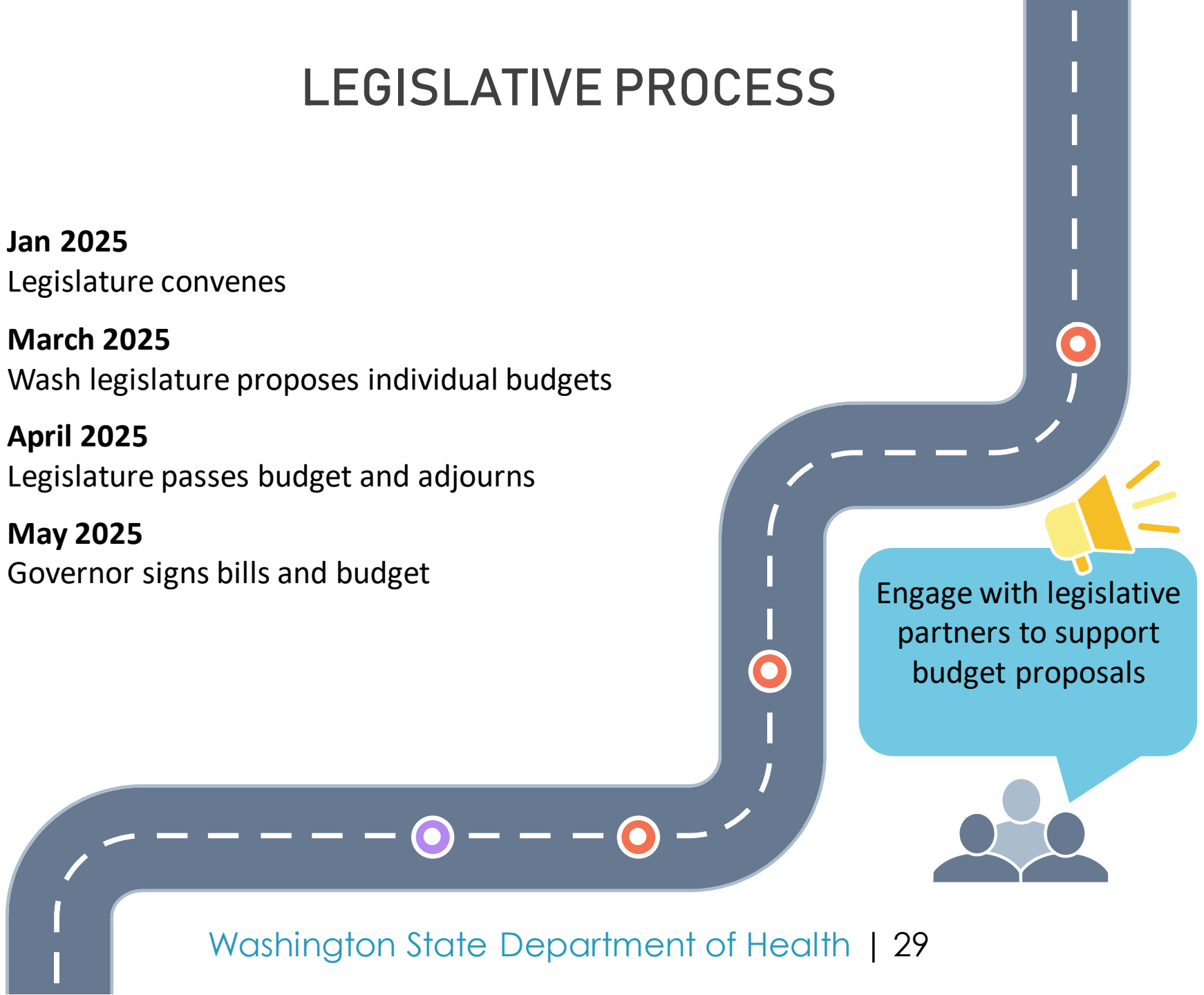
GOVERNOR'S BUDGET DEVELOPED

- **Oct 2024**
DOH and other agencies respond to questions from Office of Fiscal Management (OFM)
- **Nov 2024**
Executive leadership team (ELT) prioritizes DPs and informs OFM
- **Dec 2024**
Governor's Budget Proposal released, approving legislative requests



LEGISLATIVE PROCESS

- **Jan 2025**
Legislature convenes
- **March 2025**
Wash legislature proposes individual budgets
- **April 2025**
Legislature passes budget and adjourns
- **May 2025**
Governor signs bills and budget



Engage with legislative partners to support budget proposals

MANY THINGS SHAPE FINAL BUDGET



IMPLEMENTATION

- **July 2025**
Budget goes into effect
- **Ongoing**
Rulemaking teams work with impacted individuals to guide effective implementation



Participate in rule making committees and listening sessions; submit public comment



Three Ways Community Can Engage with WA DOH Legislative Process

1. Bring policy requests identified by community
2. Provide feedback on WA DOH requests
3. Engage in the rulemaking process to implement legislation that is signed

Rule Making at DOH

- DOH invites the public to engage in agency rulemaking
- Like new laws, adopted rules directly impact Wash residents
- Rules are requirements, adopted by agencies and informed by the public, supplementing laws passed by the legislature
- Rule Making is the process to propose, create, change, or remove rules with the intent to protect public health
- DOH uses this along with 17 health profession boards and commissions and the State Board of Health
- DOH works every year on about 125 rules projects

Opportunities to Engage with DOH Rule Making

Birth doula clarifying “culturally congruent care”

This rule making is considering amendments to update the definition of “culturally congruent care” and clarify rule expectations regarding competencies for those seeking doula certification.

Upcoming: The department is holding a rules workshop on at 6 p.m. on May 16th. [Join the rules workshop meeting via webinar using MS Teams.](#)

Learn more about this rule making: [Rules in Progress - Birth Doulas](#)

Private Detention Facilities

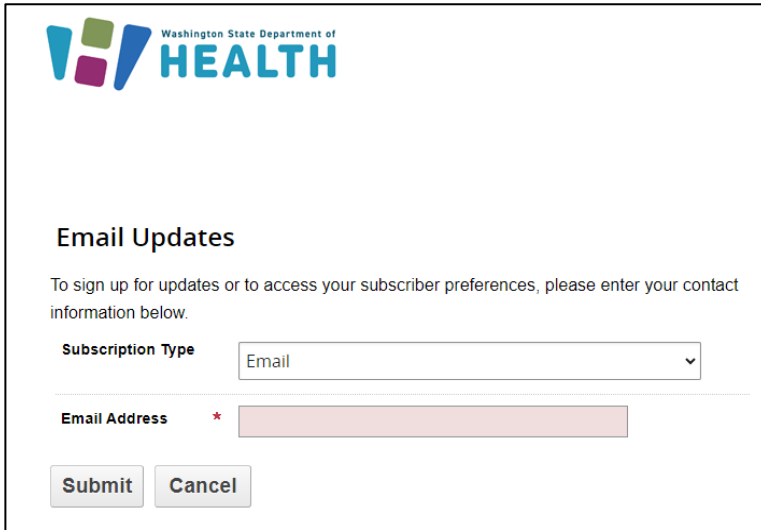
This rule making will set operational, health, and safety standards to ensure persons detained in private detention facilities are provided sanitary, hygienic, and safe living conditions as required by [HB 1470](#).

Upcoming: comment period begins in 2024 June

Learn more about this rule making: [Private Detention Facilities Rule Making](#)

How to Receive Updates on DOH Rule Making

Step 1: Login / Create Account on DOH Gov Delivery



Washington State Department of HEALTH

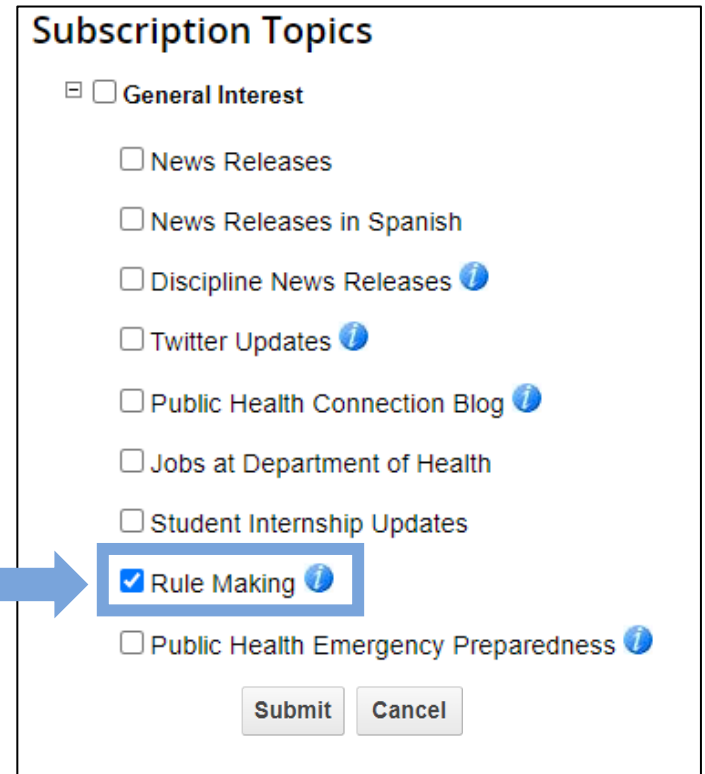
Email Updates

To sign up for updates or to access your subscriber preferences, please enter your contact information below.

Subscription Type

Email Address *

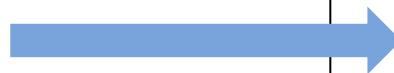
Step 2: Select 'Rule Making'



Subscription Topics

- General Interest
 - News Releases
 - News Releases in Spanish
 - Discipline News Releases ⓘ
 - Twitter Updates ⓘ
 - Public Health Connection Blog ⓘ
 - Jobs at Department of Health
 - Student Internship Updates
 - Rule Making ⓘ
 - Public Health Emergency Preparedness ⓘ

Checkbox 'Rule Making'





Call for Community
Proposals

Convocatoria de Propuestas
Comunitarias





WASHINGTON STATE
PUBLIC HEALTH ASSOCIATION

Annual Conference
October 9-11, 2024
Yakima, WA

Yakima Convention Center
10 N 8th St, Yakima, WA 98901

Conferencia Anual
9-11 de Octubre de 2024
Yakima, WA

Centro de convenciones de Yakima
10 N 8th St, Yakima, WA 98901

The Conference

What is the annual conference?

A time for people in public/community health to come together, learn from each other, get inspired, and meet others.

Who will be there?

Anyone who sees themselves as promoting health is welcome to attend. Usually people from State, Local, and Tribal government public health, students, nurses, and community-based health attend.

Is this a healthcare conference?

No. Even though some doctors and nurses may be there, we want to hear about health services from a holistic and preventative point of view.

Will scholarships be available?

Yes. We are hoping to offer a generous number of scholarships. The priority for these scholarships will be community health and students.

¿Qué es la conferencia anual?

Un momento para que las personas en salud pública/comunitaria se reúnan, aprendan unos de otros, se inspiren y conozcan a otros.

¿Quién estará allí?

Cualquiera que se considere promotor de la salud es bienvenido a asistir. Por lo general, asisten personas de salud pública del gobierno estatal, local y tribal, estudiantes, enfermeras y servicios de salud comunitarios.

¿Es esta una conferencia sobre atención médica?

No. Aunque algunos médicos y enfermeras puedan estar allí, queremos escuchar sobre los servicios de salud desde un punto de vista holístico y preventivo.

¿Habrá becas disponibles?

Sí. Esperamos ofrecer un generoso número de becas. La prioridad para estas becas será la salud de la comunidad y los estudiantes.

2024 Conference

Cultivating Social Justice: Past,
Present, and Future

Our Goals in 2024:

- Highlight civil justice movements that had their roots in community health: farmworkers movements, Black Panthers, Native pipeline protests, etc.
- Look back at the past to see how we can change the way we do things in the future.
- Highlight Yakima, WA including work being done on farm workers' and immigrants' health, and specific health challenges in the area.

2024 Conference

Cultivar la justicia social:
pasado, presente y futuro

Nuestros objetivos en 2024:

- Resalte los movimientos de justicia civil que tuvieron sus raíces en la salud comunitaria: movimientos de trabajadores agrícolas, Panteras Negras, protestas de los oleoductos nativos, etc.
- Mire hacia el pasado para ver cómo podemos cambiar la forma en que hacemos las cosas en el futuro.
- Resalte Yakima, WA, incluido el trabajo que se está realizando sobre la salud de los trabajadores agrícolas y los inmigrantes, y los desafíos de salud específicos en el área

Tell Your Story

What is an abstract?

An abstract is the formal way of telling the stories that you see every day. It is a summary of what you would present to a group about those stories.

What stories are you looking for?

We want to hear how you are promoting health. We also want to hear about how it may be challenging to work with the government system.

Example: Doulas vs. Data about Maternal Health

Will you help with the abstract?

Yes. We know that you are very busy. If you send us an email outlining who will present and a story about the work you do, we can submit the abstract for you.

¿Qué es un resumen?

Un resumen es la forma formal de contar las historias que ves todos los días. Es un resumen de lo que presentarías a un grupo sobre esas historias.

¿Qué historias estás buscando?

Queremos saber cómo está promoviendo la salud. También queremos saber cómo puede resultar difícil trabajar con el sistema gubernamental.

Ejemplo: Doulas vs. Datos sobre Salud Materna

¿Me ayudarás con el resumen?

Sí. Sabemos que estás muy ocupado. Si nos envía un correo electrónico describiendo quién presentará y una historia sobre el trabajo que realiza, podemos enviarle el resumen.

How? ¿Cómo?

Submit an abstract here:

Envíe un resumen aquí:

Or email us for help:

O envíenos un correo electrónico
para obtener ayuda:

megan@wspha.org



[www.wspha.org/submit-
an-abstract](http://www.wspha.org/submit-an-abstract)

Poll Question

How likely are you to attend the upcoming conference?

Would you be interested in attending a session on the legislative process during the October conference?



Washington State Department of
HEALTH



To request this document in another format, call 1-800-525-0127. Deaf or hard of hearing customers, please call 711 (Washington Relay) or email civil.rights@doh.wa.gov.