

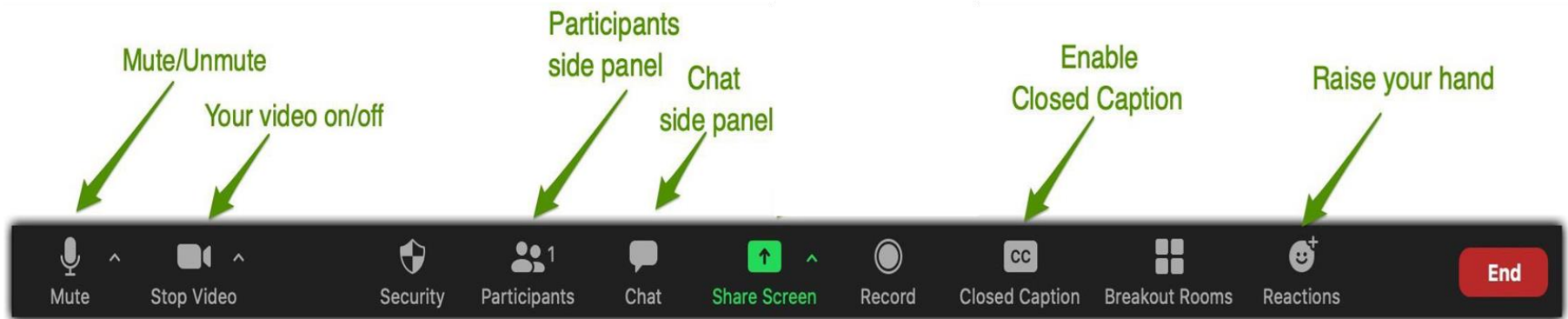
THE COMMUNITY **COLLABORATIVE**



**D-AFN WORKGROUP
DECEMBER 16, 2024**

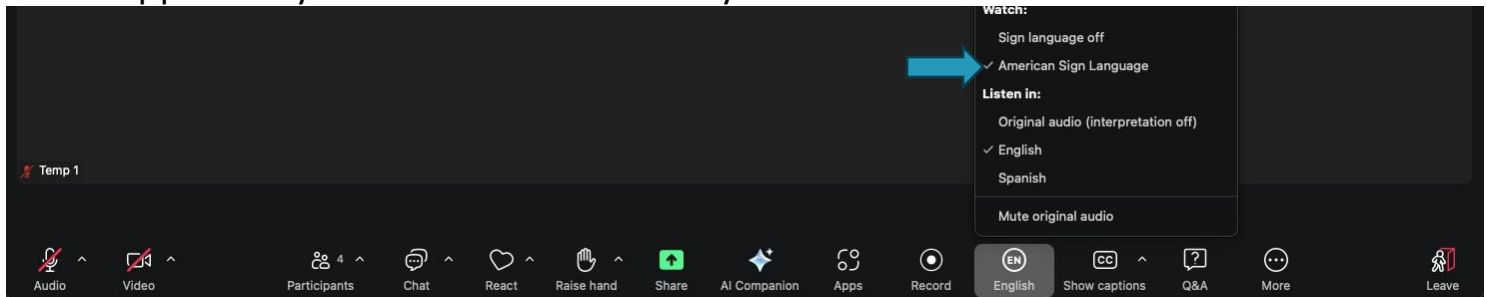
Accessibility Information

- To view live captions, click on the menu arrow next to the Closed Caption button.
- Choose from showing subtitles, a full transcript, or both.
- You may adjust the size of the captions if you wish.
- You can also Hide Subtitles if you do not want to see the text.
- Please message Tom Dineen, KAI, if you have any questions!

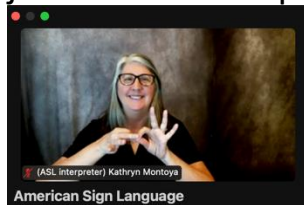


ASL Interpretation

- To view the ASL interpreters click the Interpretation button at the bottom of your Zoom Application Interface
- Choose American Sign Language from the pop up and a floating window will appear on your screen in addition to your main

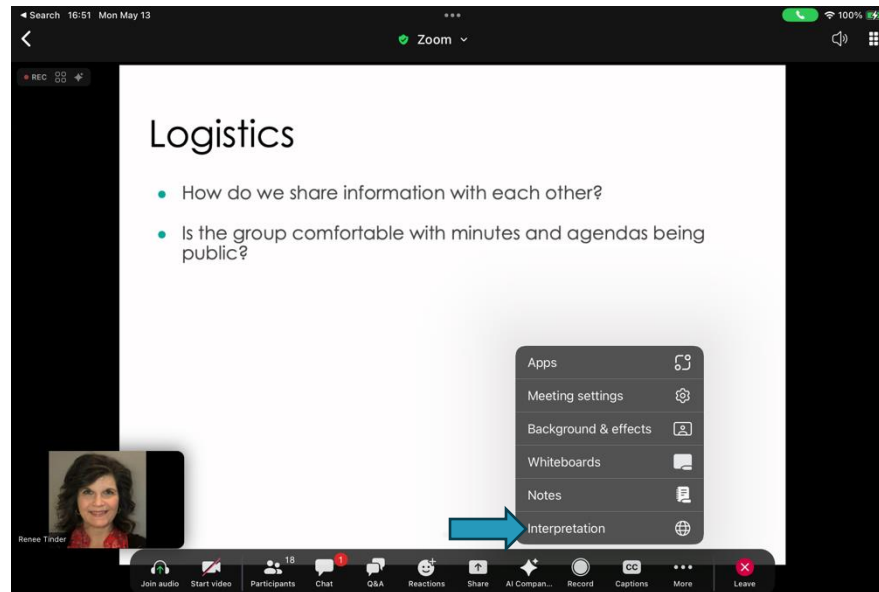


- You may adjust the size and placement of the window on your screen.



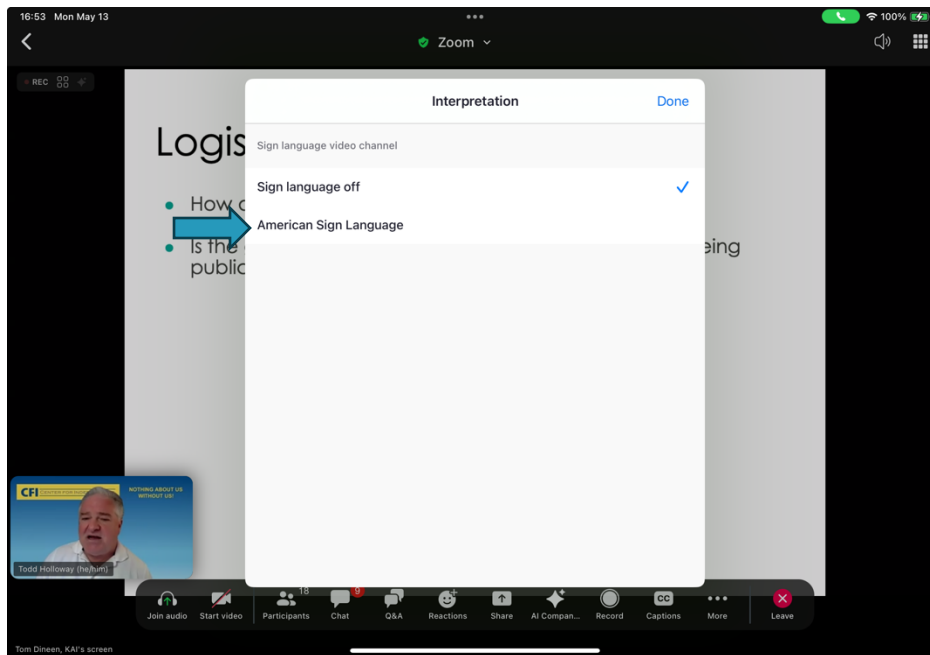
Tablet Device ASL Interpretation

- To view the ASL interpreters on an iPad or other Tablet, click the “More” button at the bottom of your Zoom Application Interface and then select the Interpretation option in the list.



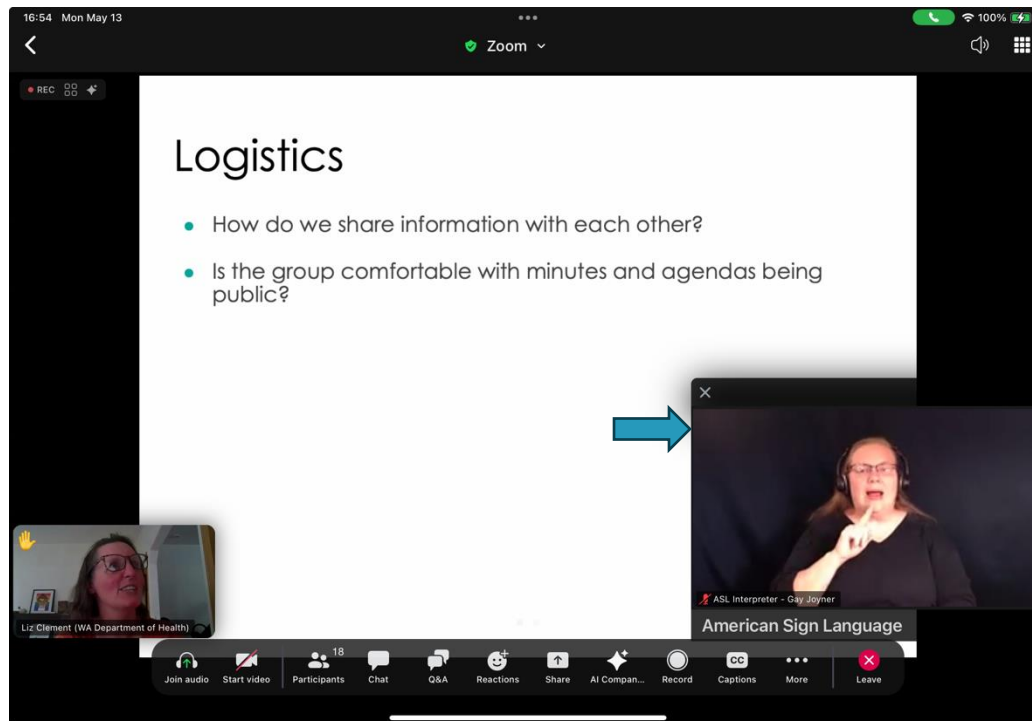
iPad ASL Interpretation (Cont.)

- Choose American Sign Language from the pop up and a floating window will appear on your screen in addition to your main



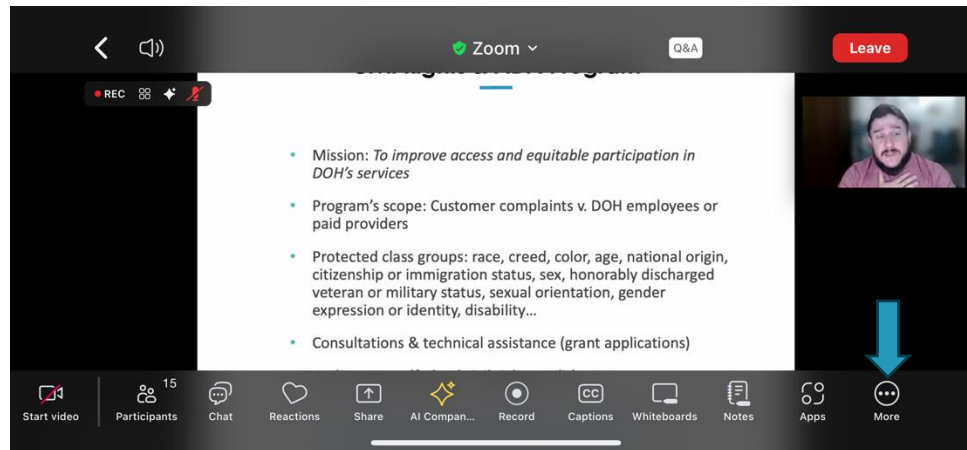
iPad ASL Interpretation (Cont.)

- You may adjust the size and placement of the window on your screen.



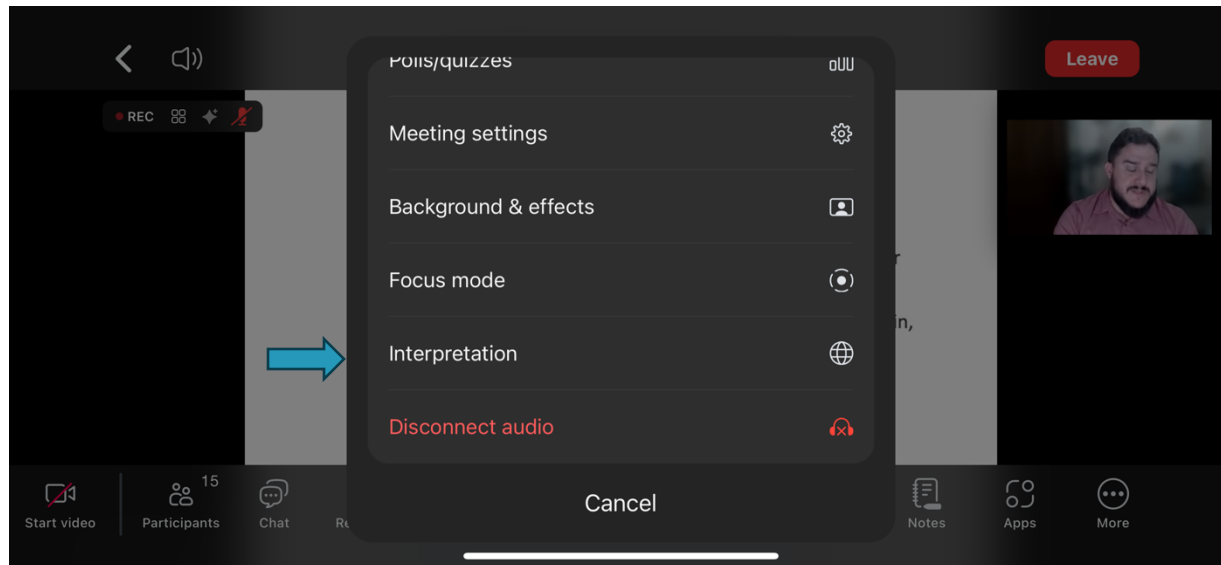
Mobile Phone ASL Interpretation

- To view the ASL interpreters on a smart phone or mobile device, either click the Interpretation Icon at the bottom of the screen, or swipe the menu bar to the left and choose the “More” button at the bottom of your Zoom Application Interface and then select the Interpretation option in the list.



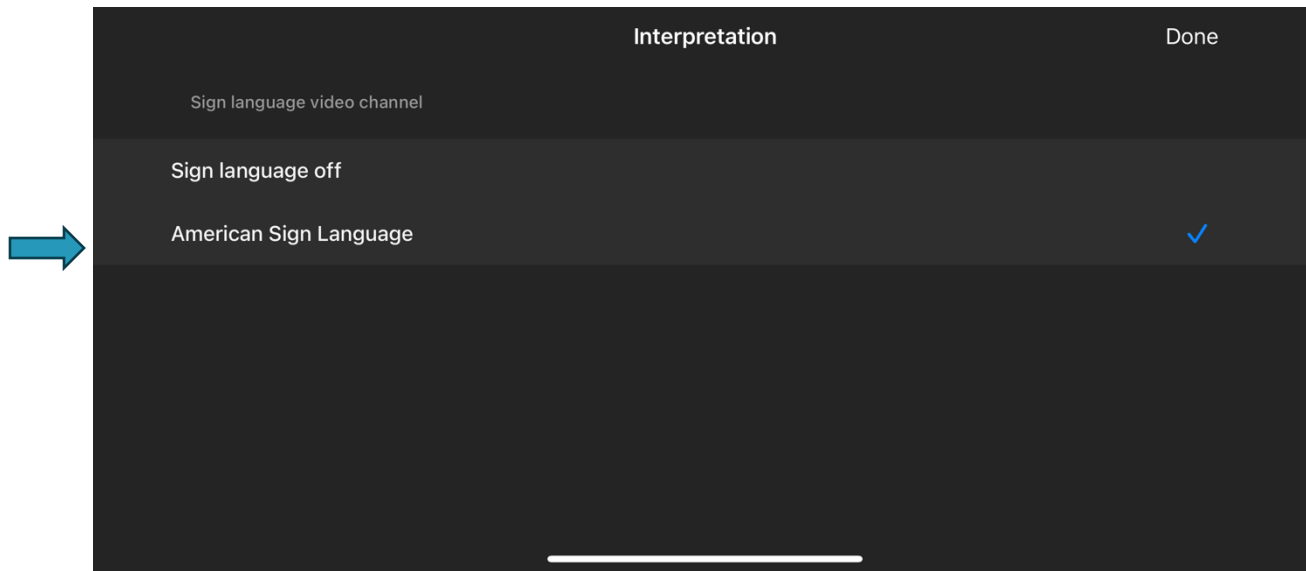
Mobile Phone ASL Interpretation (Cont.)

- Choose American Sign Language from the pop up and a floating window will appear on your screen in addition to your main



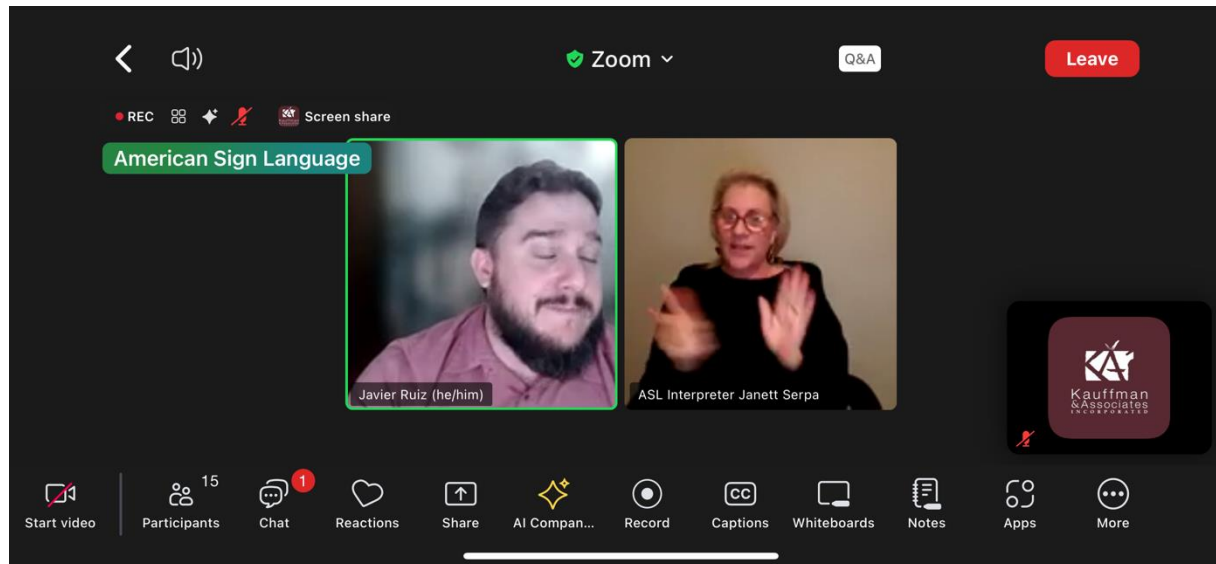
Mobile Phone ASL Interpretation (Cont.)

- Choose American Sign Language from the pop up and a floating window will appear on your screen in addition to your main



Mobile Phone ASL Interpretation (Cont.)

- The ASL Interpreter will remain spotlit on your screen.



Agenda

Welcome and Introductions

Protocols for Engaging the D-AFN Community

- Best strategies for surveying
- Revised notes structure

WA Portal Page

Behavioral Health Update

Workgroup Outreach

Planning for next meeting

Protocols for Engaging the D-AFN Community

🔗 Topic for Today: What do we need to keep in mind when surveying D-AFN Community Members?

🔗 Topic for next meeting?

WA Portal Page

- 🔗 Color updates are live across WA Portal
- 🔗 Checked on whether callouts are screen reader friendly
 - Moved accessibility information to call-out box
- 🔗 Brian and Victor are researching the possibility of revising accessibility statement site-wide



Disabilities Access and Functional Needs (D-AFN)

Community Collaborative

[Meetings](#)

[Updates and News](#)

[Sign Up](#)

[Calendar](#)

[About Us](#)

[COVID Insights](#)

[Workgroups](#)

[Carceral Health Equity](#)

[**Disabilities Access and Functional Needs**](#)

[D-AFN Meeting Materials](#)

[Environmental Justice](#)

The D-AFN working group is an inclusive space for people with disabilities or access and functional needs across the state to share their pressing health concerns with DOH, get answers and influence agency decision-making. The workgroup is intended to center and prioritize people with disabilities and intersecting marginalized identities who experience compounded oppression.

Accessibility

The DAFN workgroup is committed to ensuring digital accessibility for people with disabilities. Meetings are supported by ASL interpretation and closed captioning. Those with other access needs should email Community.Collaborative@doh.wa.gov or include this information on the partner interest form.

DOH is committed to meet accessibility standards in all its work and to improve the user experience for everyone. This site has been designed to meet WCAG 2.1AA. If you are having accessibility issues with this site please send an e-mail to Community.Collaborative@doh.wa.gov. Click here for more [information on accessibility](#).

How to join

Workgroup membership is open to all who are interested. To join our work group, please fill out the following interest form: [Disabilities Access and Functional Needs Partner Interest Form](#)

A workgroup host will follow up with you to learn more about your interests and share more about the workgroup.

Meeting information

Our meetings are on the third Monday of each month, from 4:30 to 6:00 p.m. Compensation of \$50/hour is available for those whose organizations are not already paying them to participate. Compensation can be direct deposited or provided in the form of an e-gift card.

[See meeting materials from past meetings.](#)

Workgroup Outreach

- 🔗 Who else needs to be at the table?
 - Geography
 - Type of disability or access and functional need
 - Intersectionality
- 🔗 Mirror WA-CIEP strategy using CMIST
- 🔗 Sample outreach letter

Our Parking Lot

- 🔗 **Creating a space to share stories**
- 🔗 **Continued Outreach**
- 🔗 **Non-written languages**
- 🔗 **Mental Health and Pain Management**
- 🔗 **Emergency Response & Preparedness**
- 🔗 **Our approach to land and labor acknowledgement**

Planning for our next meeting

Possible Topics

- 🔗 Lessons learned from Hurricane response & recovery
 - Amber McPherson – OHRS
 - Todd Holloway

- 🔗 Future Directions for our group
 - Future topics for discussion
 - Understanding DOH's mandate and scope of work

- 🔗 Behavioral Health

- 🔗 Creating a Space to Share Stories

Next meeting: January 13th, 4:30-6:00



To request this document in another format, call 1-800-525-0127. Deaf or hard of hearing customers, please call 711 (Washington Relay) or email civil.rights@doh.wa.gov.