

THE COMMUNITY COLLABORATIVE



9545_OPAE_COMMUNITY COLLAB GRAPHIC



January 8, 2025
8 de Enero de 2025

Welcome // Bienvenidos

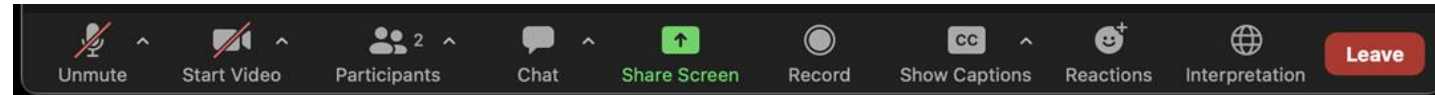
Please share in the chat your name, organization and one issue you plan to highlight with legislators in 2025

Por favor comparte en el chat su nombre, organización y un tema que espera destacar con los legisladores en 2025

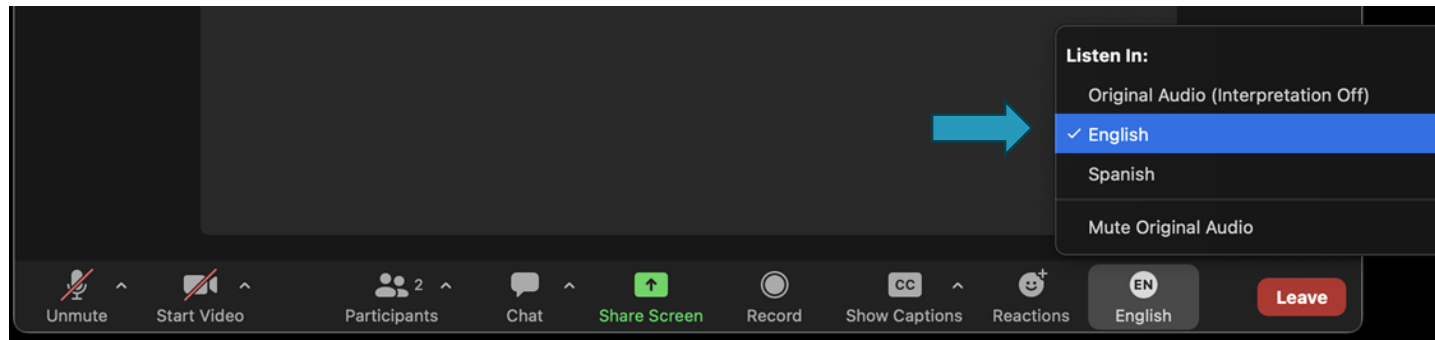


Interpretación de Idiomas

Seleccionar **Interpretación**



Elige **Inglés, Español or Otro**



Chat “Tom Dineen, KAI” con preguntas



Cyril Walrond
Community Thought
Partner

LAND AND LABOR
ACKNOWLEDGEMENT

RECONOCIMIENTO
DE TIERRA Y
TRABAJO



Alice Fong
CEO at Center for
Ethical Leadership

PUBLIC HEALTH
ADVISORY BOARD

JUNTA ASESORA DE
SALUD PÚBLICA

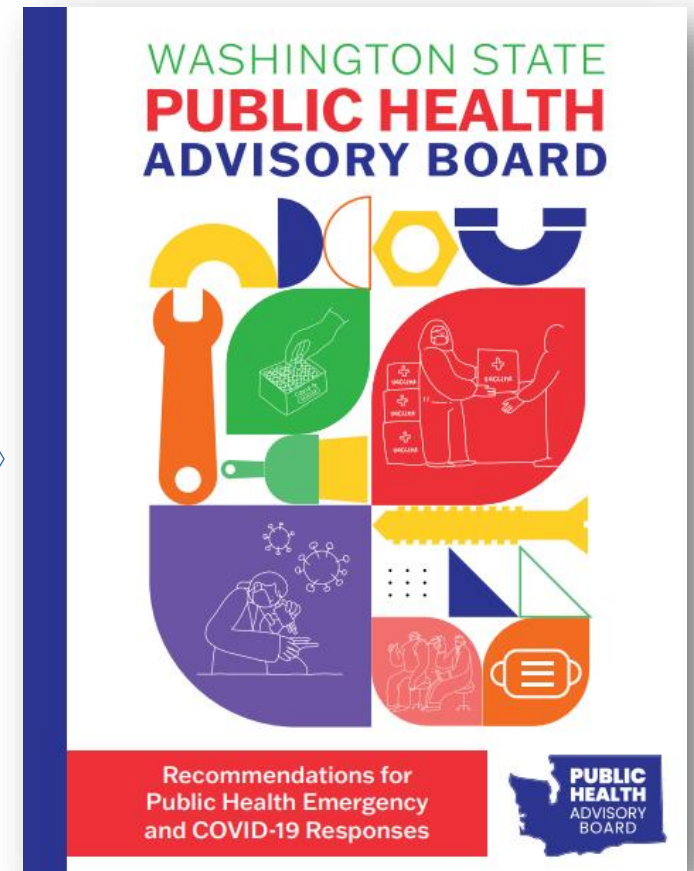


- Created by legislature in 2021
- 20 Governor-appointed Board Members
- Representing different sectors and community supports east and west of the Cascades

<https://waportal.org/partners/public-health-advisory-board>



- ✓ Reviewed statewide after-action reviews and 'A Chorus of COVID'
- ✓ Shared preliminary recommendations with different groups for feedback
- ✓ Assessed more than 320 potential actions to ensure:
 - Actionable
 - Equitable
 - Addresses system deficiencies
 - Impactful
 - Politically feasible
- ✓ Three (3) final recommendations with 11 prioritized actions

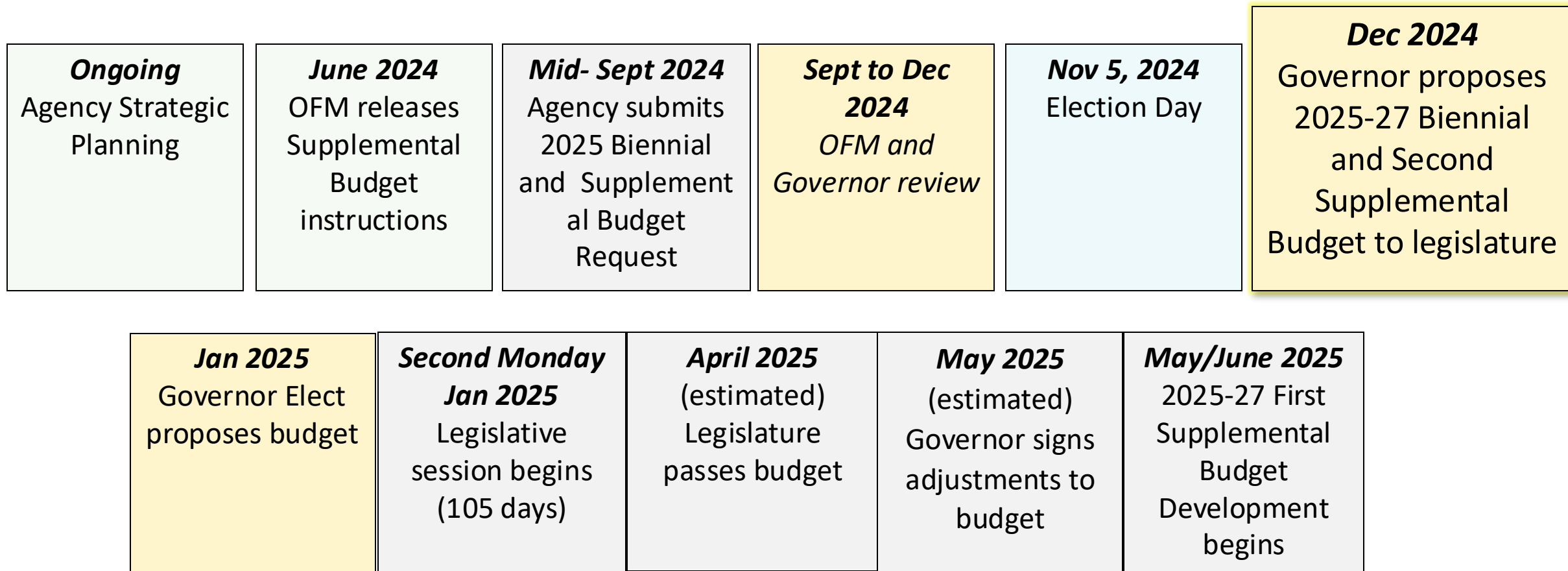




DOH BUDGET
UPDATE

ACTUALIZACIÓN
DEL PRESUPUESTO
DEL DOH

Washington State Budget Process – 2025 Session - Biennial and Second Supplemental Budget



Governor Inslee Proposed Biennial and Second Supplemental Budget

- Governor Inslee's Proposed Budgets are the first step in the legislative process.
- Governor-Elect Ferguson will be sworn in as our new Governor on January 15.
- Governor-elect Ferguson may propose his own budget or adjust Governor Inslee's proposed budget.
- The typical process for producing a state budget will follow.
- Helpful Links

[2025-27 Supplemental Governor's Budget and Policy Highlights](#)

[Governor's Proposed 2025-27 Biennial Budget](#)

[Governor's Proposed 2025 Supplemental Budget](#)

Governor Inslee Proposed Biennial and Second Supplemental Budget

- Governor Inslee shared that Washington is facing a projected budget shortfall of \$10 - \$12B
- Revenues are also impacting this shortfall due to lagging home sales and collection of sales and capital gains taxes.
- The Office of Financial Management (OFM) required agencies to propose budget reductions and implemented a freeze on hiring, contracts, goods/services, and travel
- Governor Inslee has proposed two major revenue source proposals including a Wealth Tax and an increase to the Business & Occupation Tax

Public Health Programs and the Governor's Proposed Budget

Included

988 Call Centers - \$13.2m in SFY25 and \$35.7m in 2025-27

988 IT System - \$37.95m in 2025-27

Fruit & Vegetable Incentive Program - \$6m in 2025-27

Reproductive Health Services - \$617k in SFY25 and \$617k in SFY26

Healthy Environment for All (HEAL) - \$6.4m in 2025-27

School Based Health Centers - \$2.4m in 2025-27

Behavioral Health Workforce - \$3m in 2025-27

Not Included

Most decision packages, including Community Engagement and Investments

Legislative Education Days

- Feb 11: [Children's Alliance – Have a Heart for Kids Day](#)
- Feb 13: [APIC Wash](#)
- March 6: [Washington State Public Health Association](#)
- March 10: [Latino Legislative Day](#)





Are you aware of
other legislative
education days?

Discussion with Secretary of Health Dr. Shah





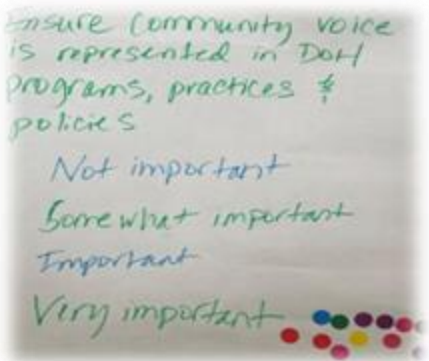
LOOK BACK LOOK
AHEAD

MIRAR HACIA
ATRAS, MIRAR
HACIA ADELANTE

The Community Collaborative in January 2025

A **collective** that centers the voice and perspective of community partners so that DOH practices, programs and policies reduce health inequities and improve health outcomes for Black, Indigenous, communities of color and all those facing harm due to systemic racism and oppression.

Meetings



Workgroups

HEALTH HARMS RELATED TO INCARCERATION

People with a history of incarceration are in worse mental and physical health compared to the general population. Data from the Bureau of Justice Statistics

Newsletter



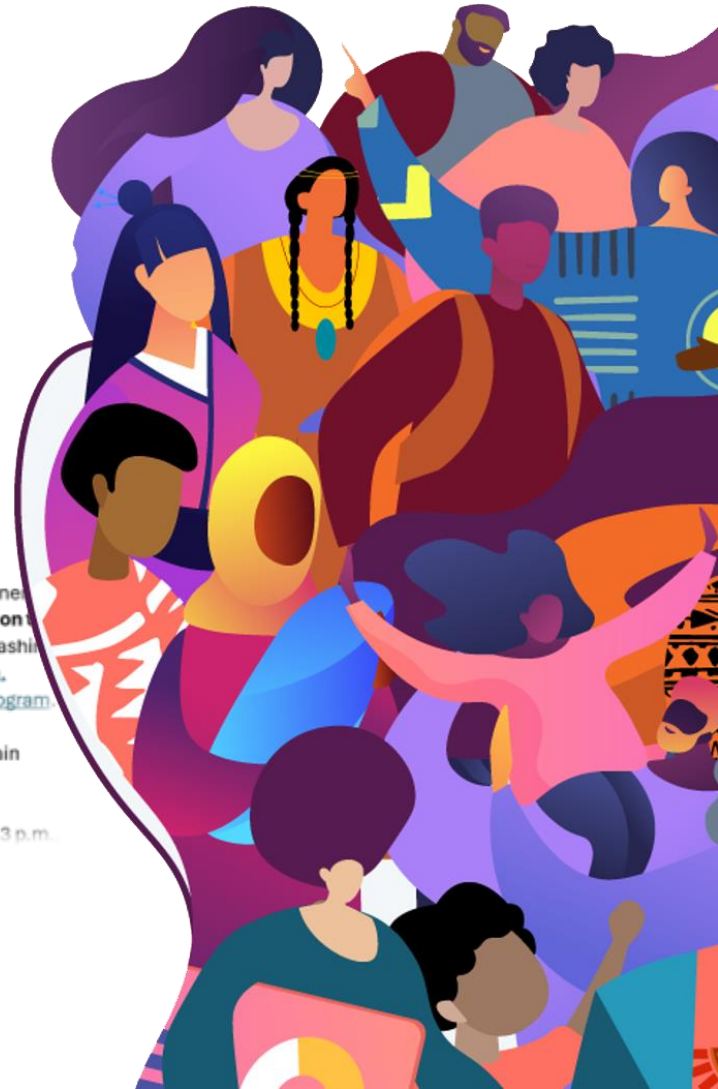
Interactions & Outreach

Dear Community Partners:

We invite you and your colleagues/partners to attend WIC's 50th Anniversary Celebration on Friday, September 13th, hosted by the Washington State Department of Health Women, Infants, and Children (WIC) Nutrition Program.

Location: Skagit Riverwalk Park, 509 Main Street, Mount Vernon

Time: Community event from 10 a.m. to 3 p.m.



Team Supporting the Community Collaborative



Melissa West



Kylin Beeson



Julia Wilson-Peltier



Omid Bagheri-Garakani



Frances Limtiaco



Rael Odengo

DOH Community Relations & Equity



Nilofer Ahsan



Brandon Smith



Jennifer Gillissen



Nicole Pino



Meagan Jackson



Tom Dineen

Kauffman and Associates Support

Look Back Look Ahead

Jan 17, 2024 we asked
the Community
Collaborative:

“What actions would
you prioritize to
improve health and
advance equity in
your community?”



In breakouts

What is the one aspect of the Community Collaborative that provides the greatest value?

What bubbles up from each breakout?

Easy Retro

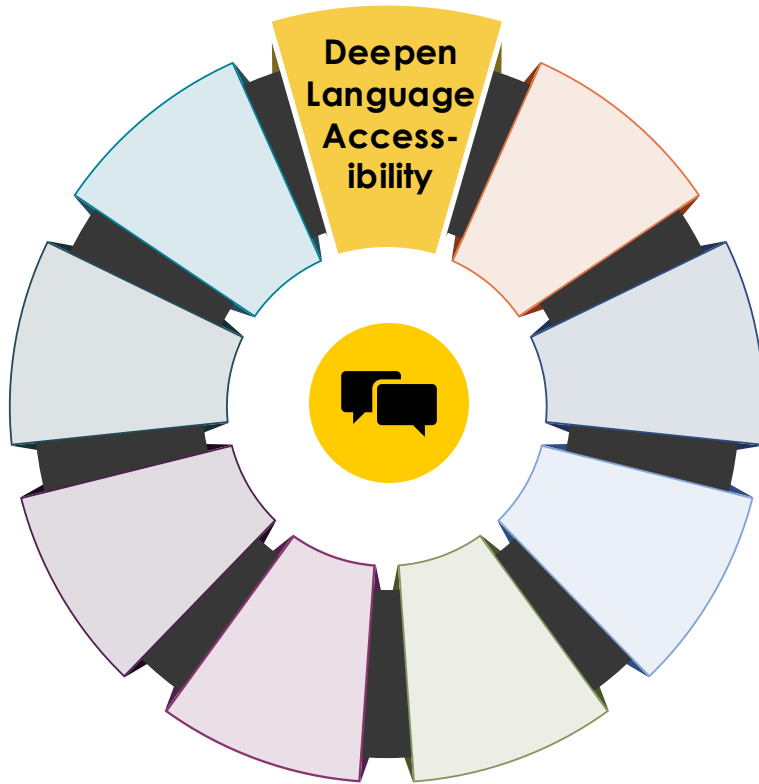


BACKGROUND SLIDES FOR FURTHER DISCUSSION

Deepen Language Accessibility

Look Back

Look Ahead



- ASL, Spanish, other languages on request in Collaborative + Workgroup meetings
- Notice of language interpretation - 6 languages
- Added Zoom captions in other languages
- DAFN workgroup provided feedback on the Language Access Plan, increased accessibility of WA Portal
- Contributed to interpretation for rulemaking videos

- Increase accessibility of meetings and breakout rooms
- Targeted outreach to increase participation

Improve Access to Public Health Messaging

Look Back

Look Ahead



- Shared culturally and linguistically appropriate resources through Collaborative newsletter
- Gathered input from community partners to shape future messaging e.g., immunization, nutrition, behavioral health and Be Well Washington

- Obtain CBO input on what resources are most needed, and how to best share them
- Prioritize communications to communities most at risk of misinformation

Build on Community Expertise

Look Back

Look Ahead



- Engaged 120+ members across 7 workgroups
- Learned from partners on topics such as:
 - Using community media to engage hard-to-reach populations
 - Using surveys and data to understand the specific needs of communities
 - Reaching specific communities

- Policymaker education training
- Support cross-agency partnerships with community organizations implementing community driven solutions and innovations



Better Understand Community Needs

Look Back

Look Ahead

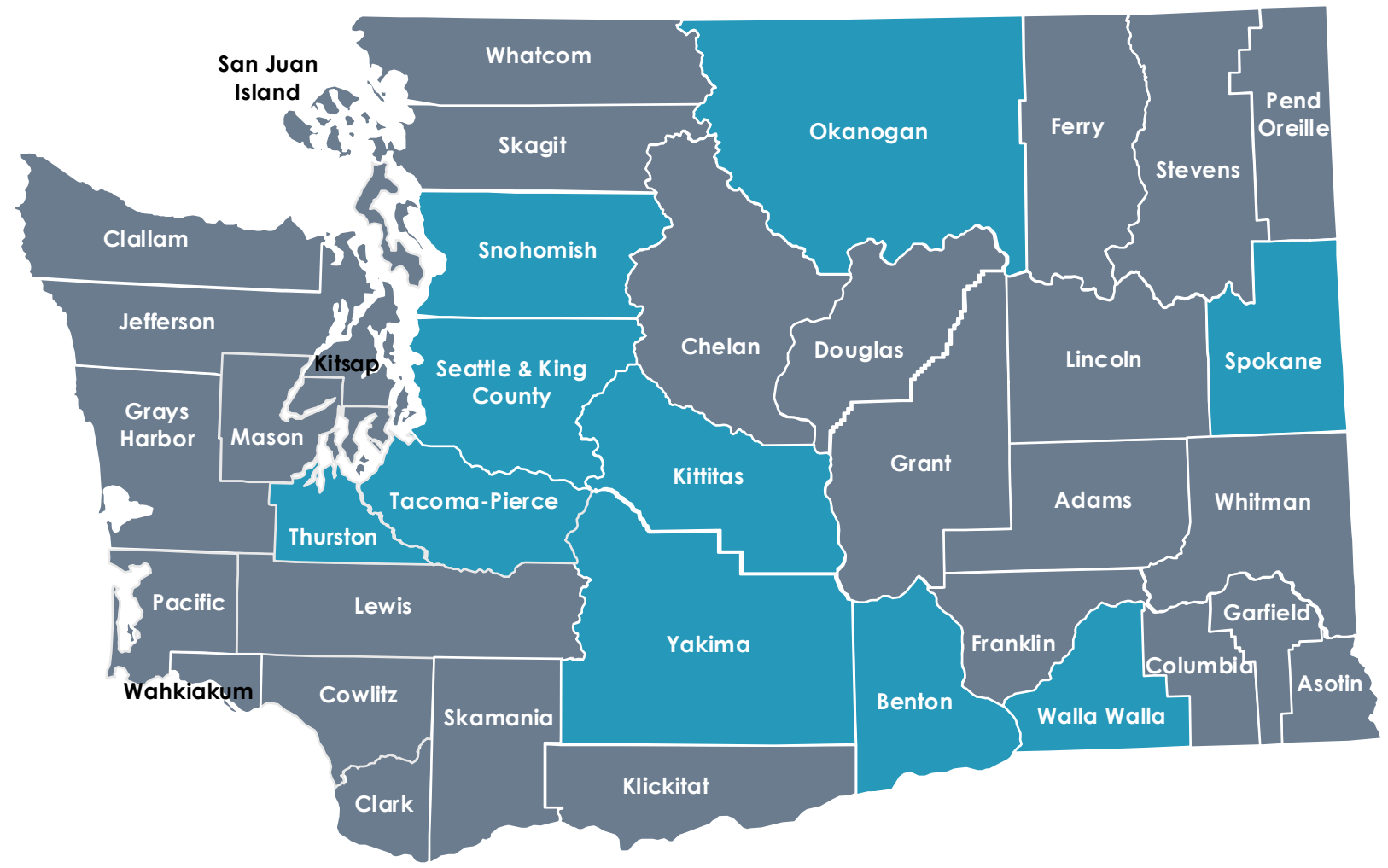


- Added 4 Thought Partners from Central and Eastern Washington
- Met with 150+ community partners
- Learned from 25+ community partners about their work in community in Collaborative sessions
- CHE workgroup engagement with 136 individuals with lived experience in carceral systems

- Partner to understand how DOH can support unique needs of unauthorized individuals
- Continue weekly outreach to community partners

Thought Partners Now Represent the Following Counties

Covering 71% of the State's Population



Improve Function of Community Collaborative

Look Back



- Improved Community Collaborative newsletter
 - 2500+ subscribers
 - 33% open rate
- Removed registration requirements for virtual meetings
- Engaged Community Collaborative in workgroups to inform State Health Improvement Plan (SHIP), Environmental Justice work
- Developed contracts and TORs for Thought Partners

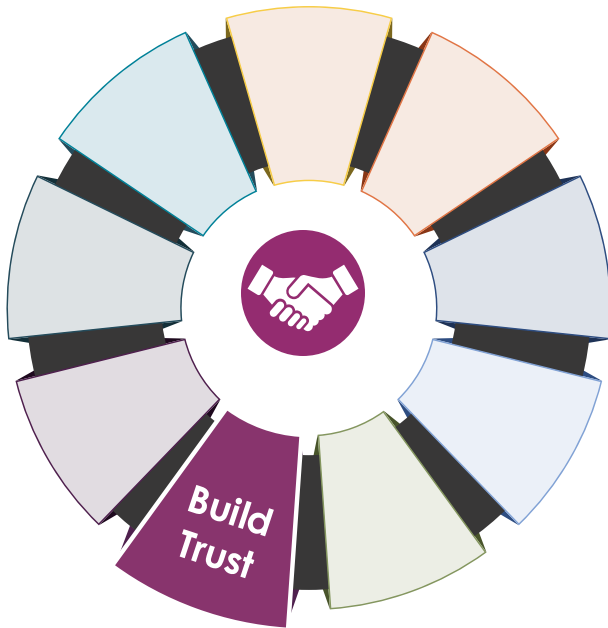
Look Ahead

- Continue to develop ways to increase community interaction during meetings
- Consider regional and in-person approaches (Collaborative “Redesign”)
- Double FT staff with Workforce Pathways fellow through mid 2026

Build Trust

Look Back

Look Ahead

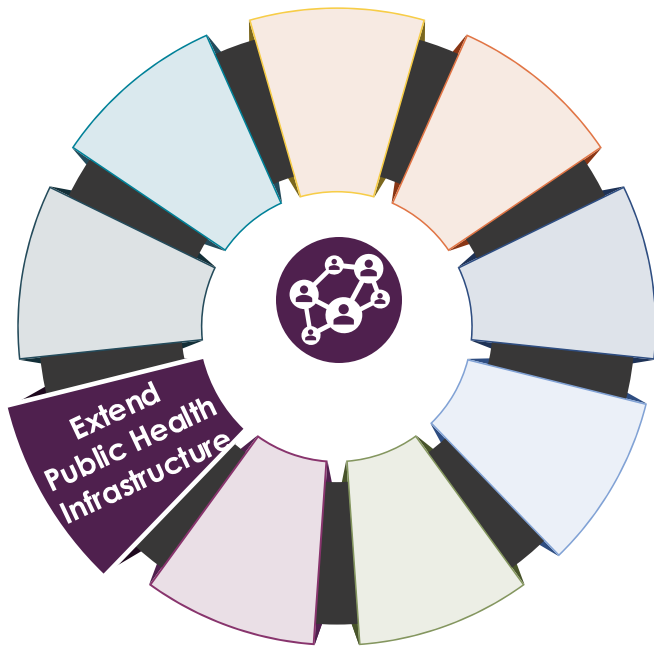


- Held 2-day in-person retreat with 18 Thought Partners
- Held in-person Collaborative meeting at WSPHA and funded community participation
- Transparency around DOH areas of influence

- More clearly define where DOH has influence or control
- More in-person connection opportunities
- Other ideas?

Extend Public Health Infrastructure

Look Back



- Identified service providers for several partners
- Cross-agency engagement to elevate community issues: Care-a-Van, addressing chronic conditions, naloxone distribution
- Served as a resource for LHJs interested in community partnerships

Look Ahead

- Develop additional pathways to work across DOH programs, with local health departments and across the system to elevate community voice, issues and needs

Partner Beyond Health

Look Back

- Built relationships with DSHS, Commerce, Office of Equity, State Board of Health
- Developed resource list for newly arrived migrants

Look Ahead

- Continue to explore root causes and intersectionality of issues
- Help serve as a connector and convener for CBOs to strengthen community connections
- Develop and share central resource lists



Create Supportive Funding Environment

Look Back

Look Ahead



- Obtained community input and submitted funding package requests for Community Engagement, Behavioral Health, Nutrition
- Regularly shared funding opportunities in newsletter
- Provided feedback to DOH programs to allocate more and better resources to community partners
- Thought Partners participated in review committees for investment decisions
- Compensated 80+ community partners for their voice and input

- Continue to explore and highlight other sources of funding and submit applications as appropriate





ANNOUNCEMENTS

NOTICIAS

THE COMMUNITY COLLABORATIVE



Community Collaborative Survey

On a scale of 1-10, how satisfied are you with the following:

<https://forms.gle/bcgJJByY3Nk6o188>

	2	3	4	5	6	7	8	9	10 - Extremely Satisfied
Monthly virtual meetings	<input type="radio"/>	<input type="radio"/>	<input type="radio"/>	<input type="radio"/>	<input type="radio"/>	<input type="radio"/>	<input type="radio"/>	<input type="radio"/>	<input type="radio"/>
Newsletter	<input type="radio"/>	<input type="radio"/>	<input type="radio"/>	<input type="radio"/>	<input type="radio"/>	<input type="radio"/>	<input type="radio"/>	<input type="radio"/>	<input type="radio"/>



Next Meeting

**February 12, 2025 – 988,
Urban Indian Initiative**

Próxima Reunión

12 de Febrero de 2025



Healthier Washington Collaboration Portal

*A resource for the state's health and wellness
professionals*

[https://waportal.org/partners/
community-collaborative](https://waportal.org/partners/community-collaborative)

“Hope and fear
cannot occupy
the same space.
Invite one to
stay.”

- *Maya Angelou*





To request this document in another format, call 1-800-525-0127. Deaf or hard of hearing customers, please call 711 (Washington Relay) or email civil.rights@doh.wa.gov.