



LOOK BACK LOOK  
AHEAD

MIRAR HACIA  
ATRAS, MIRAR  
HACIA ADELANTE

# The Community Collaborative in January 2025

A **collective** that centers the voice and perspective of community partners so that DOH practices, programs and policies reduce health inequities and improve health outcomes for Black, Indigenous, communities of color and all those facing harm due to systemic racism and oppression.

## Meetings

*Ensure Community voice is represented in DoH programs, practices & policies*

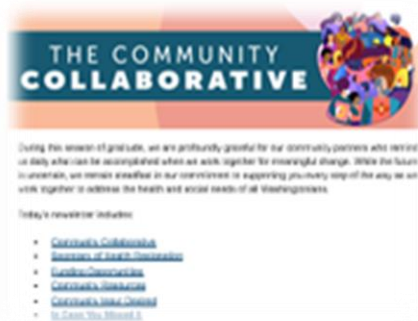
*Not important*  
*Somewhat important*  
*Important*  
*Very important*

## Workgroups

### HEALTH HARMS RELATED TO INCARCERATION

People with a history of incarceration are in worse mental and physical health compared to the general population. Data from the Bureau of Justice Statistics

## Newsletter



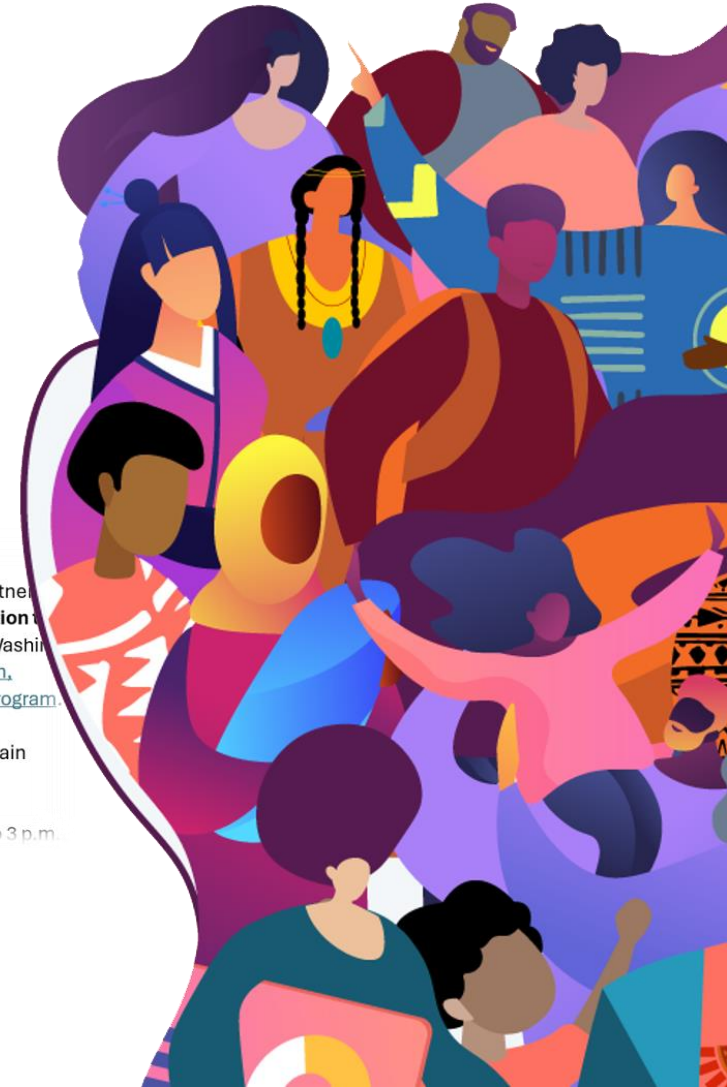
## Interactions & Outreach

Dear Community Partners:

We invite you and your colleagues/partners to attend **WIC's 50<sup>th</sup> Anniversary Celebration** on **Friday, September 13<sup>th</sup>**, hosted by the Washington State Department of Health **Women, Infants, and Children (WIC) Nutrition Program**.

**Location:** Skagit Riverwalk Park, 509 Main Street, Mount Vernon

**Time:** Community event from 10 a.m. to 3 p.m.



# Team Supporting the Community Collaborative



Melissa West



Kylin Beeson



Julia Wilson-Peltier



Omid Bagheri-Garakani



Frances Limtiaco



Rael Odengo

**DOH Community Relations & Equity**



Nilofer Ahsan



Brandon Smith



Jennifer Gillissen



Nicole Pino



Meagan Jackson



Tom Dineen

**Kauffman and Associates Support**



# Look Back Look Ahead

---

Jan 17, 2024 we asked  
the Community  
Collaborative:

“What actions would  
you prioritize to  
improve health and  
advance equity in  
your community?”



# In breakouts

---

What is the one aspect of the Community Collaborative that provides the greatest value?

What bubbles up from each breakout?

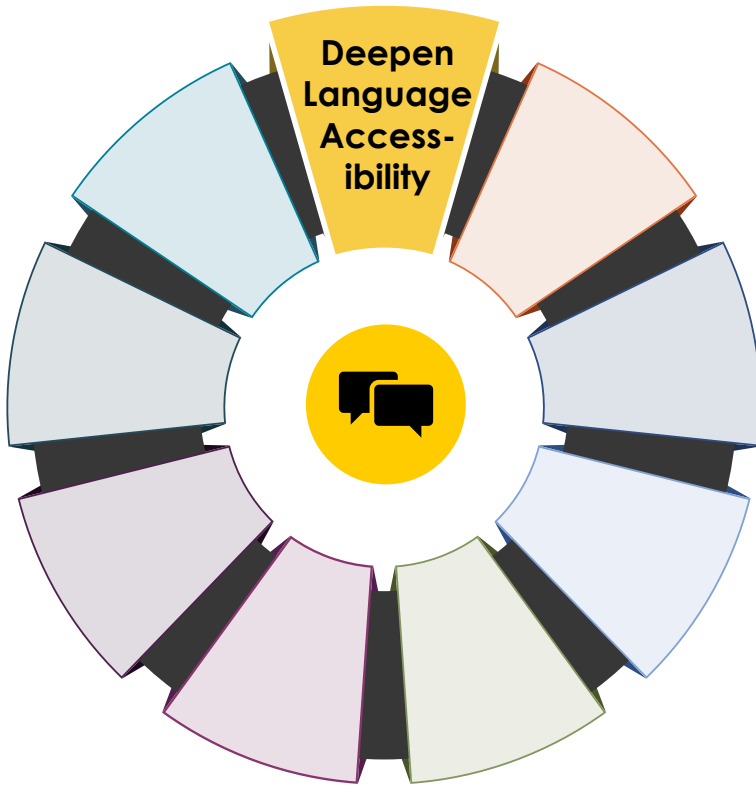
Easy Retro



# Deepen Language Accessibility

## Look Back

## Look Ahead



- ASL, Spanish, other languages on request in Collaborative + Workgroup meetings
- Notice of language interpretation - 6 languages
- Added Zoom captions in other languages
- DAFN workgroup provided feedback on the Language Access Plan, increased accessibility of WA Portal
- Contributed to interpretation for rulemaking videos

- Increase accessibility of meetings and breakout rooms
- Targeted outreach to increase participation

# Improve Access to Public Health Messaging

## Look Back

## Look Ahead



- Shared culturally and linguistically appropriate resources through Collaborative newsletter
- Gathered input from community partners to shape future messaging e.g., immunization, nutrition, behavioral health and Be Well Washington

- Obtain CBO input on what resources are most needed, and how to best share them
- Prioritize communications to communities most at risk of misinformation

# Build on Community Expertise

## Look Back

## Look Ahead



- Engaged 120+ members across 7 workgroups
- Learned from partners on topics such as:
  - Using community media to engage hard-to-reach populations
  - Using surveys and data to understand the specific needs of communities
  - Reaching specific communities
- Policymaker education training
- Support cross-agency partnerships with community organizations implementing community driven solutions and innovations





# Better Understand Community Needs

## Look Back

## Look Ahead

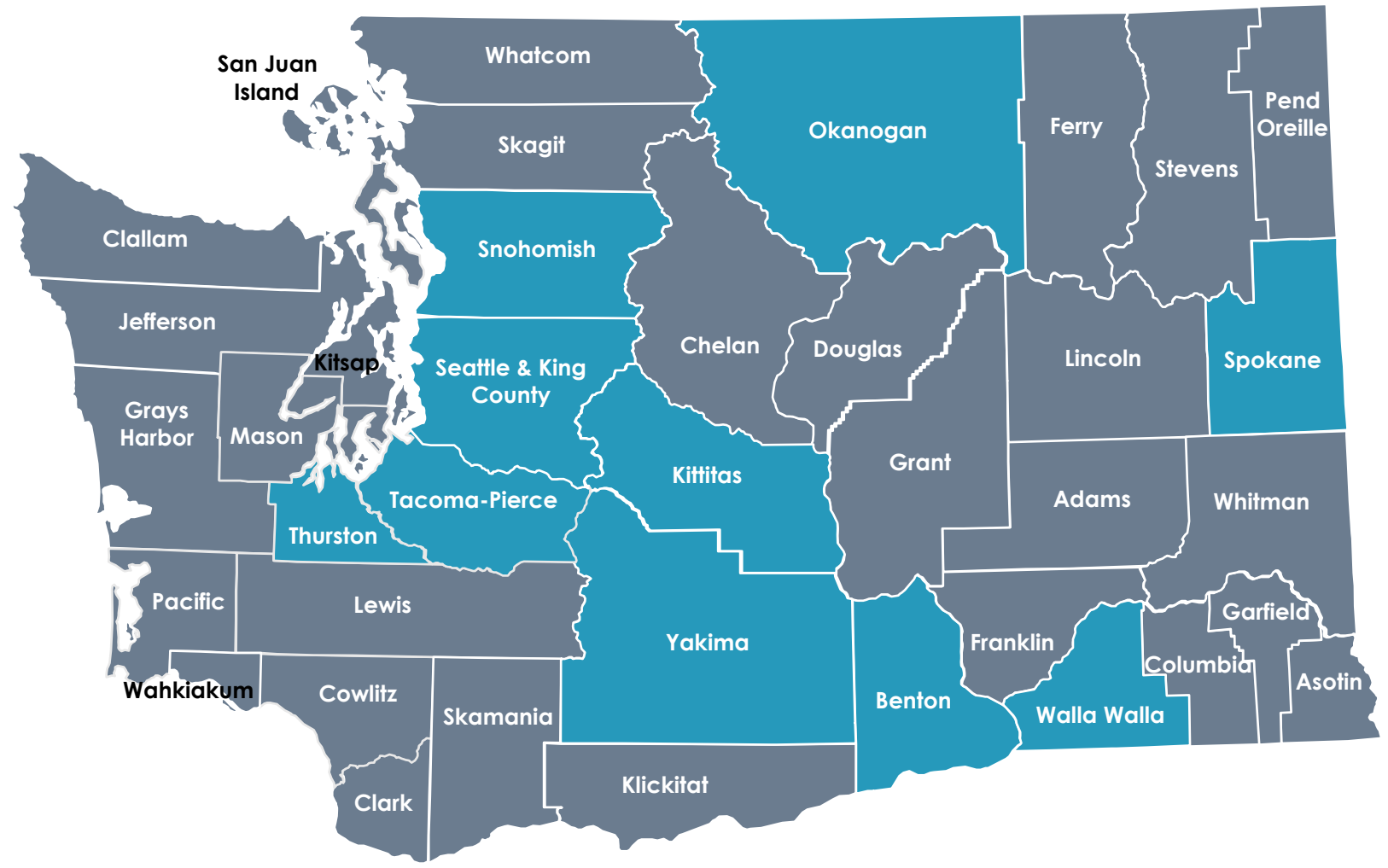


- Added 4 Thought Partners from Central and Eastern Washington
- Met with 150+ community partners
- Learned from 25+ community partners about their work in community in Collaborative sessions
- CHE workgroup engagement with 136 individuals with lived experience in carceral systems

- Partner to understand how DOH can support unique needs of unauthorized individuals
- Continue weekly outreach to community partners

# Thought Partners Now Represent the Following Counties

*Covering 71% of the State's Population*



# Improve Function of Community Collaborative

## Look Back

## Look Ahead



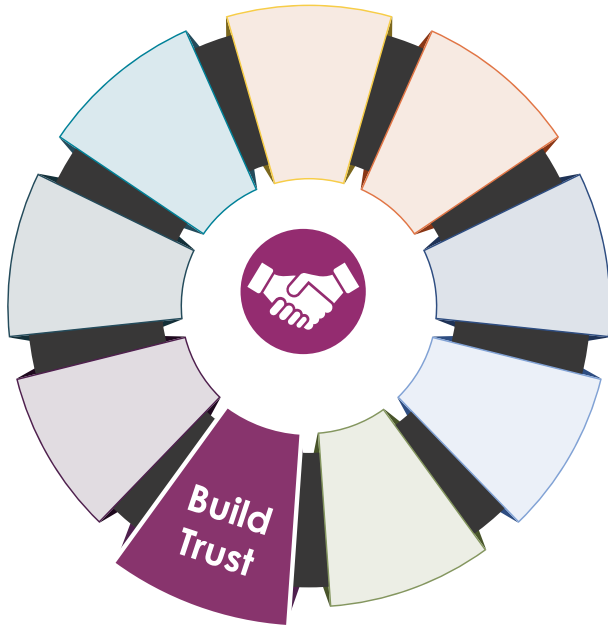
- Improved Community Collaborative newsletter
  - 2500+ subscribers
  - 33% open rate
- Removed registration requirements for virtual meetings
- Engaged Community Collaborative in workgroups to inform State Health Improvement Plan (SHIP), Environmental Justice work
- Developed contracts and TORs for Thought Partners

- Continue to develop ways to increase community interaction during meetings
- Consider regional and in-person approaches (Collaborative “Redesign”)
- Double FT staff with Workforce Pathways fellow through mid 2026

# Build Trust

## Look Back

## Look Ahead



- Held 2-day in-person retreat with 18 Thought Partners
- Held in-person Collaborative meeting at WSPHA and funded community participation
- Transparency around DOH areas of influence

- More clearly define where DOH has influence or control
- More in-person connection opportunities
- Other ideas?

# Extend Public Health Infrastructure

## Look Back



- Identified service providers for several partners
- Cross-agency engagement to elevate community issues: Care-a-Van, addressing chronic conditions, naloxone distribution
- Served as a resource for LHJs interested in community partnerships

## Look Ahead

- Develop additional pathways to work across DOH programs, with local health departments and across the system to elevate community voice, issues and needs



# Partner Beyond Health

## Look Back

- Built relationships with DSHS, Commerce, Office of Equity, State Board of Health
- Developed resource list for newly arrived migrants

## Look Ahead

- Continue to explore root causes and intersectionality of issues
- Help serve as a connector and convener for CBOs to strengthen community connections
- Develop and share central resource lists



# Create Supportive Funding Environment

## Look Back

## Look Ahead



- Obtained community input and submitted funding package requests for Community Engagement, Behavioral Health, Nutrition
- Regularly shared funding opportunities in newsletter
- Provided feedback to DOH programs to allocate more and better resources to community partners
- Thought Partners participated in review committees for investment decisions
- Compensated 80+ community partners for their voice and input

- Continue to explore and highlight other sources of funding and submit applications as appropriate

