

THE COMMUNITY COLLABORATIVE



9545_OPAE_COMMUNITY COLLAB GRAPHIC



A Summary – Jan 2024 to Present
March 19, 2025

The Community Collaborative

A **collective** that centers the voice and perspective of Community-Based Organizations so that DOH practices, programs and policies reduce health disparities and improve health outcomes for Black, Indigenous, communities of color and all those facing harm due to systemic racism and oppression.

Meetings

Ensure Community voice is represented in DoH programs, practices & policies

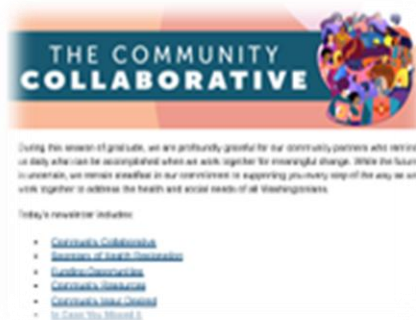
Not important
Somewhat important
Important
Very important

Workgroups

HEALTH HARMS RELATED TO INCARCERATION

People with a history of incarceration are in worse mental and physical health compared to the general population. Data from the Bureau of Justice Statistics

Newsletter



Interactions & Outreach

Dear Community Partners:

We invite you and your colleagues/partners to attend **WIC's 50th Anniversary Celebration** this **Friday, September 13th**, hosted by the Washington State Department of Health **Women, Infants, and Children (WIC) Nutrition Program**.

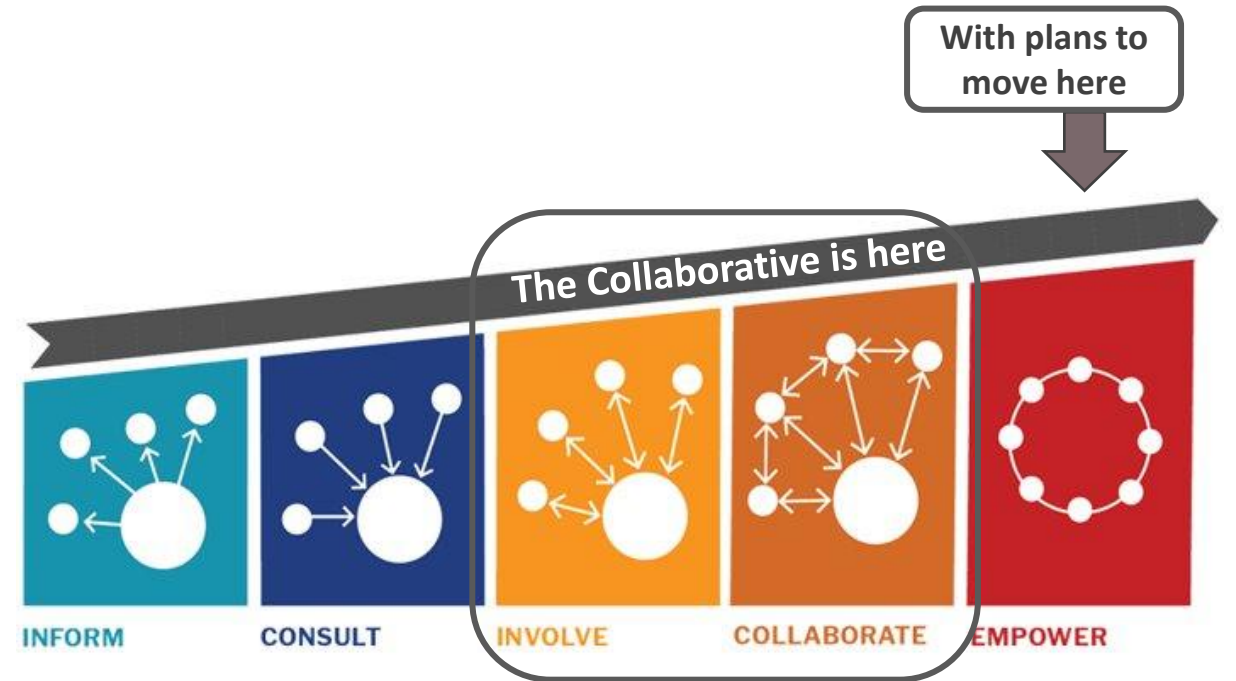
Location: Skagit Riverwalk Park, 509 Main Street, Mount Vernon

Time: Community event from 10 a.m. to 3 p.m.



Approach to Collaborative Engagement

- Center the voices of communities most impacted by health disparities, (though all are welcome)
- Move from “inform” (talk at) toward collaboration (talk with) and shared power
- Align DOH initiatives with efforts to address Social Determinants of Health and the broader systemic factors influencing well-being
- Develop connections, community capacity, partnerships and networks within DOH and across organizations



Our Starting Point: Building Trust

We Heard



Actions Taken

“DOH—Be willing to work and collaborate with organizations.”

“Most of these communities are not connected to the health systems and have fear of the systems.”

“The Community Collaborative work on how to build trust between members and health systems. Or at least bridging the two”

“Trust has been damaged in the past and can only be regain by building relationship.”



- Increase transparency and access to information
- Build relationships, identifying in-person meeting opportunities & connection points
- Support, elevate and compensate Thought Partners as trusted messengers
- Launch COVID Insights in 22 languages

Key Results 2024-Present

Meetings

Monthly virtual meetings

- 100+ community members attend
- Increased engagement with ELT (6 in 2024)
- Discussed 30+ DOH initiatives or programs
- ASL, Spanish, other interpretation provided on request

Thought Partner 2- day retreat conducted to identify priorities

- Sec of Health participation

First in-person meeting at WSPHA in Oct '24

Workgroups

7 Community Collaborative workgroups: Carceral Health Equity, Disability Access Functional Needs (DAFN), Environmental Justice, NHPI, PEAR, SHIP

Engaged and compensated 150+ members

Ad hoc support e.g. selecting DOH community grantees, equity in rulemaking, 988 feedback

Example Outcomes: DOH air quality guidance, accessibility improvements to policies & web sites

Newsletter

Revamped newsletter

- Integrated community feedback
- 40% open rate
- 150% growth

Development of new digital news platform and functionality

Interactions & Outreach

Built out directory of 2500 community partners and organizations by county, type

Responses to 25+ DOH and LHJ requests to identify community partners

Surveys, e.g. DOH Decision Packages

Foster cross-Collab engagement and personal interaction

Look Back Look Ahead

Jan 17, 2024 we asked
the Community
Collaborative:

“What actions would
you prioritize to
improve health and
advance equity in
your community?”

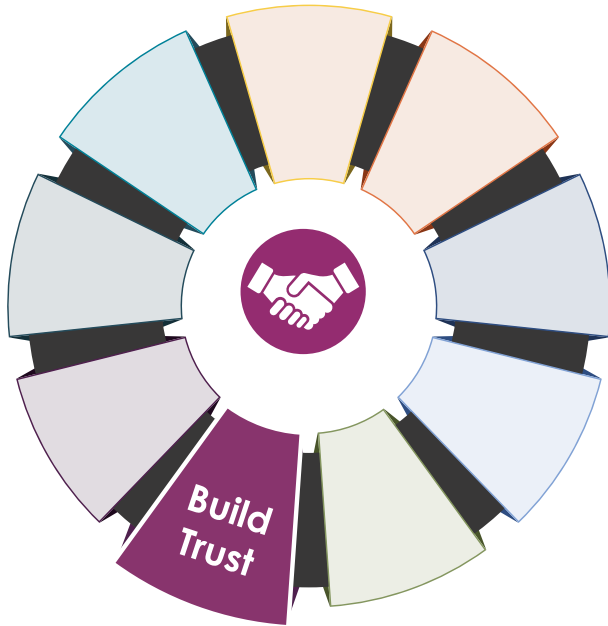
https://waportal.org/sites/default/files/2024-01/Jan%2017%202024_CC%20Meeting_Mural%20Board%20Summary_508.pdf



Build Trust

Look Back

Look Ahead



- Survey and integrate community inputs
 - Transparency around DOH areas of influence
 - Held 2-day in-person retreat with 18 Thought Partners
 - Held in-person Collaborative meeting at WSPHA and funded community participation
 - Launch COVID Insights in 22 languages
- More clearly define where DOH has influence or control
 - More in-person connection opportunities
 - Other ideas?

Extend Public Health Infrastructure

Look Back



- Identified service providers for several partners
- Cross-agency engagement to elevate community issues: Care-a-Van, addressing chronic conditions, naloxone distribution
- Served as a resource for LHJs interested in community partnerships

Look Ahead

- Develop additional pathways to work across DOH programs, with local health departments and across the system to elevate community voice, issues and needs

Partner Beyond Health

Look Back

- Built relationships with DSHS, Commerce, Office of Equity, State Board of Health
- Developed resource list for newly arrived migrants

Look Ahead

- Continue to explore root causes and intersectionality of issues
- Help serve as a connector and convener for CBOs to strengthen community connections
- Develop and share central resource lists



Create Supportive Funding Environment

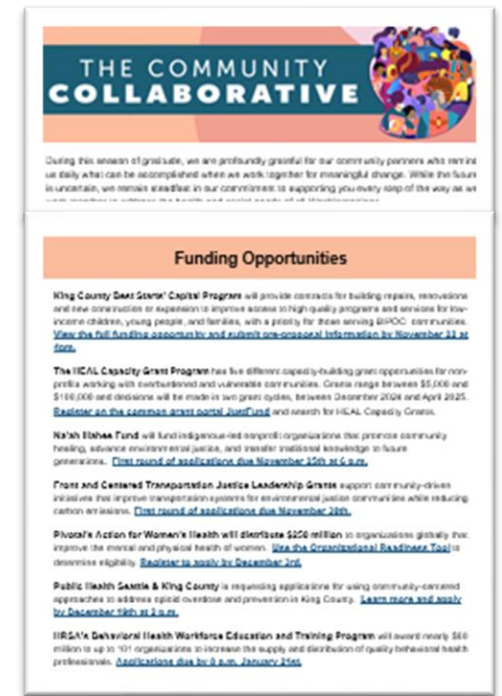
Look Back

Look Ahead



- Obtained community input and submitted funding package requests for Community Engagement, Behavioral Health, Nutrition
- Regularly shared funding opportunities in newsletter
- Provided feedback to DOH programs to allocate more and better resources to community partners
- Thought Partners participated in review committees for investment decisions
- Compensated community partners for their voice and input

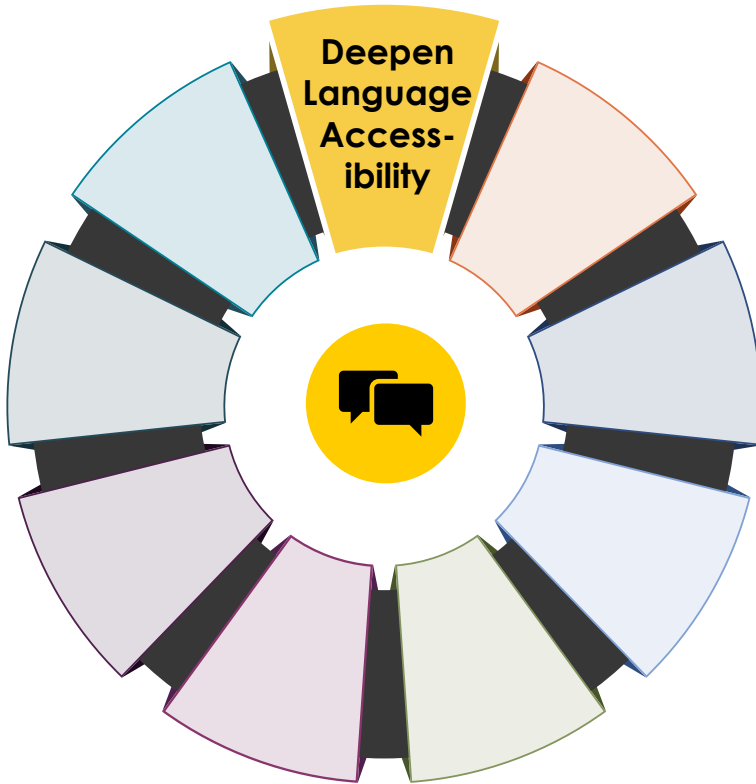
- Continue to explore and highlight other sources of funding and submit applications as appropriate



Deepen Language Accessibility

Look Back

Look Ahead



- ASL, Spanish, other languages on request in Collaborative + Workgroup meetings
- Notice of language interpretation - 6 languages
- Added Zoom captions in other languages
- DAFN workgroup provided feedback on the Language Access Plan, increased accessibility of WA Portal
- Contributed to interpretation for rulemaking videos

- Increase accessibility of meetings and breakout rooms
- Targeted outreach to increase participation

Improve Access to Public Health Messaging

Look Back

Look Ahead

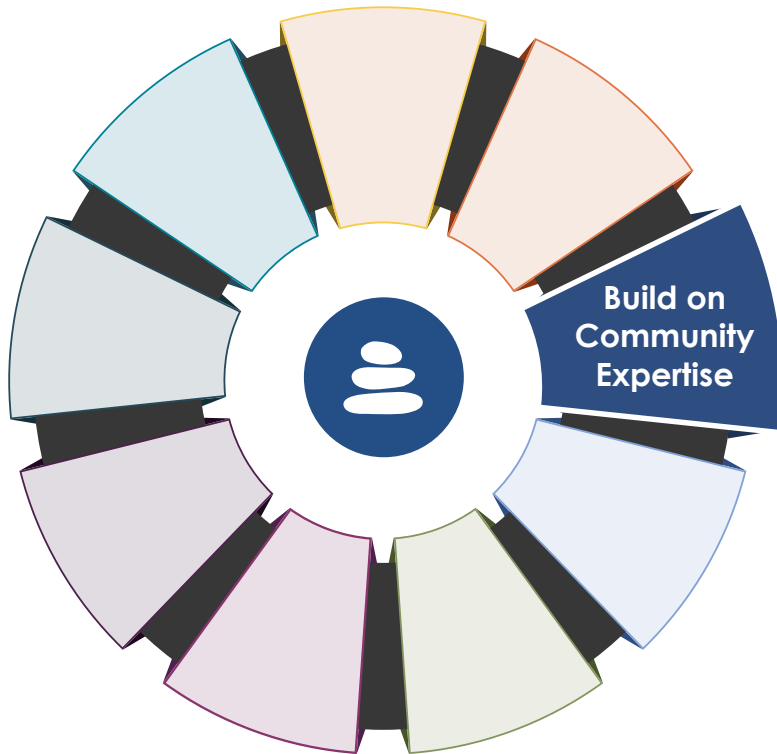


- Shared culturally and linguistically appropriate resources through newsletter
- Gathered input from community partners to shape future messaging e.g., immunization, nutrition, behavioral health and Be Well Washington
- Obtain CBO input on what resources are most needed, and how to best share them
- Prioritize communications to communities most at risk of misinformation

Build on Community Expertise

Look Back

Look Ahead



- Engaged 150+ members across 7 workgroups
- Learned from partners on topics such as:
 - Using community media to engage hard-to-reach populations
 - Using surveys and data to understand the specific needs of communities
 - Reaching specific communities

- Policymaker education training
- Support cross-agency partnerships with community organizations implementing community driven solutions and innovations



Better Understand Community Needs

Look Back

Look Ahead

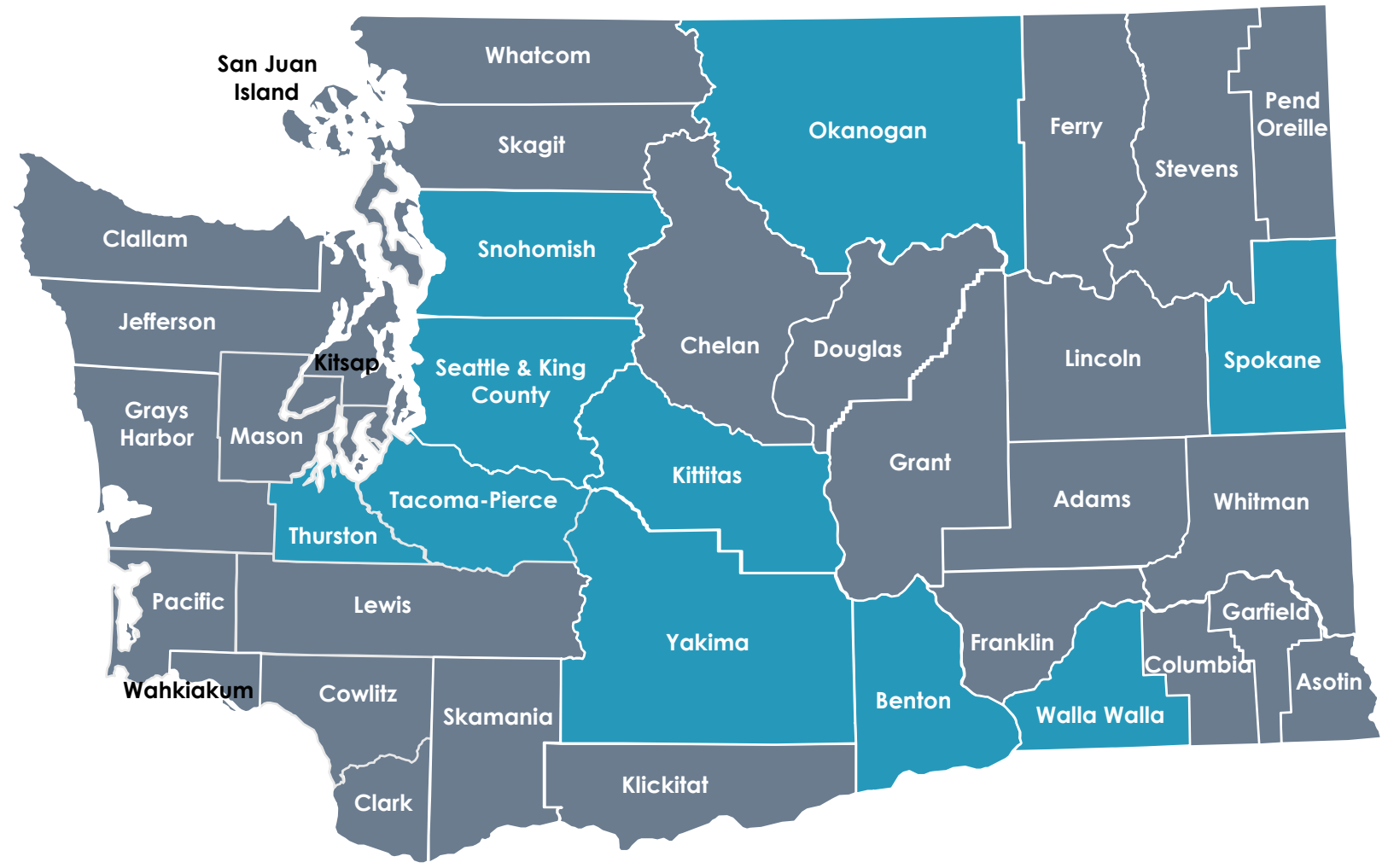


- Added 4 Thought Partners from Central and Eastern Washington
- Met with 150+ community partners
- Learned from 25+ community partners about their work in community in Collaborative sessions
- CHE workgroup engagement with 136 individuals with lived experience in carceral systems

- Partner to understand how DOH can support unique needs of unauthorized individuals
- Continue weekly outreach to community partners

Thought Partners Now Represent the Following Counties

Covering 71% of the State's Population



Improve Function of Community Collaborative

Look Back

Look Ahead



- Improved Community Collaborative newsletter
 - 2500+ subscribers
 - 39.5% open rate
- Removed registration requirements for virtual meetings
- Engaged Community Collaborative in workgroups to inform State Health Improvement Plan (SHIP), Environmental Justice work
- Developed contracts and TORs for Thought Partners and integrated PEAR

- Mailchimp for newsletter
- Develop ways to increase community interaction during meetings
- Consider regional and in-person approaches (Collaborative “Redesign”)
- Increase FT staff with Workforce Pathways fellow through mid 2026