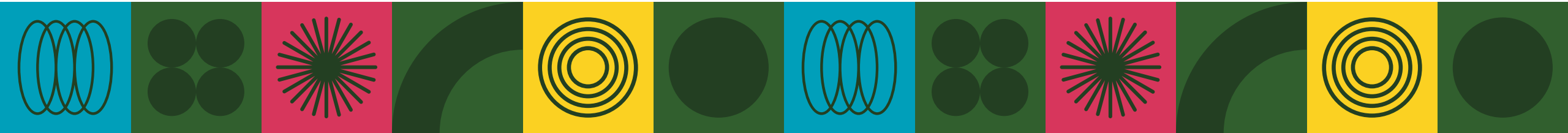




# Well-Being in Washington

Presentation to Community Collaborative

Lindsay Morgan Tracy | Economic Justice Team | 2025







A collaboration between experts with lived experience, community organizations, state and tribal governments, and legislators to implement the 10-Year Plan to Dismantle Poverty.

Our mission is to ensure every Washingtonian can meet their basic needs, fully contribute their talents, and pass well-being on to future generations.



# 8 Strategies

## Blueprint for a Just & Equitable Future: 10-Year Plan to Dismantle Poverty



**1: UNDO STRUCTURAL RACISM & INEQUALITY**  
Understand structural racism, historical trauma and inequality, and undo their legacy in policies, programs and practices.



**5: PRIORITIZE URGENT NEEDS**  
Prioritize the urgent needs of people experiencing homelessness, hunger, violence, substance use disorder or behavioral illness.



**2: BALANCE POWER**  
Make equal space in decision-making for people and communities most affected by poverty and inequality.



**6: BUILD A HOLISTIC CONTINUUM OF CARE**  
Build an integrated human service care system that addresses the holistic needs of Washingtonians.



**3: INCREASE ECONOMIC OPPORTUNITY**  
Target equitable income growth, education opportunities and wealth-building among people with low incomes.



**7: DECRIMINALIZE POVERTY**  
Decriminalize poverty and reduce reliance on the child welfare, juvenile justice and criminal justice systems.



**4: ENSURE FOUNDATIONAL WELL-BEING**  
Invest in social and economic conditions to promote the intergenerational well-being of children, adults and seniors.



**8: PREPARE FOR THE FUTURE OF WORK**  
Ensure a just and equitable transition to the future of work.

# What Alliance Does

A group of people in a circle, some standing and some sitting on the ground, holding hands in a supportive circle.

## Radical Collaboration

- Cross-system infrastructure for problem-solving and aligned action
- Strong relationships with community organizations
- Deep trust and engagement with people served by health, housing and human services

A pink background with a magnifying glass over a bar chart and a pie chart.

## Evidence-Based Solutions

- Deep knowledge and applied understanding of social and economic policy, safety net programs, and family and worker supports
- Cross-system policy and program analysis
- Data analysis and stories
- Pilots

A yellow background with a network of lines and nodes, resembling a star or a complex web.

## Alignment & Action

- Multiagency and system alignment toward shared results and strategic planning
- Statutory pathway for legislative-executive collaboration and action
- Federal support
- Public-private partnerships

A blue background with a network of lines and nodes, resembling a star or a complex web, with a lightbulb at the bottom.

## Learning & Accountability

- Measurement framework and data dashboard
- Advisory Council
- Action tracking
- Impact analysis
- Federal tracking

# Who We Work With

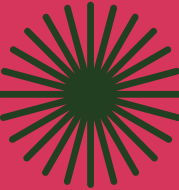
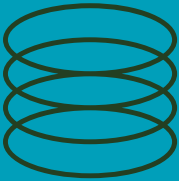


# Centering Experts with Experience in the 10-Year Plan



Meet the Experts with Lived Experience of Poverty

- “If we want to change the narrative – we also have to change the narrator. The work was about this statement.”
- “It wasn’t about a single process - - it was about the relationships.”
- “In advisory committees or other work, there is an us and a them. This work shelved the ‘them’. It turned it into a ‘we’.”
- “When people affected by a policy or program are in the room, leadership is much more likely to give those meetings merit. Sitting in the same space with a common purpose - - makes a difference. If not, you are doing business as normal and the status quo won’t change.”







# Impact

**270 POLICY, PROGRAM &  
FUNDING ACTIONS**



**10<sup>TH</sup> LOWEST POVERTY  
RATE IN NATION**

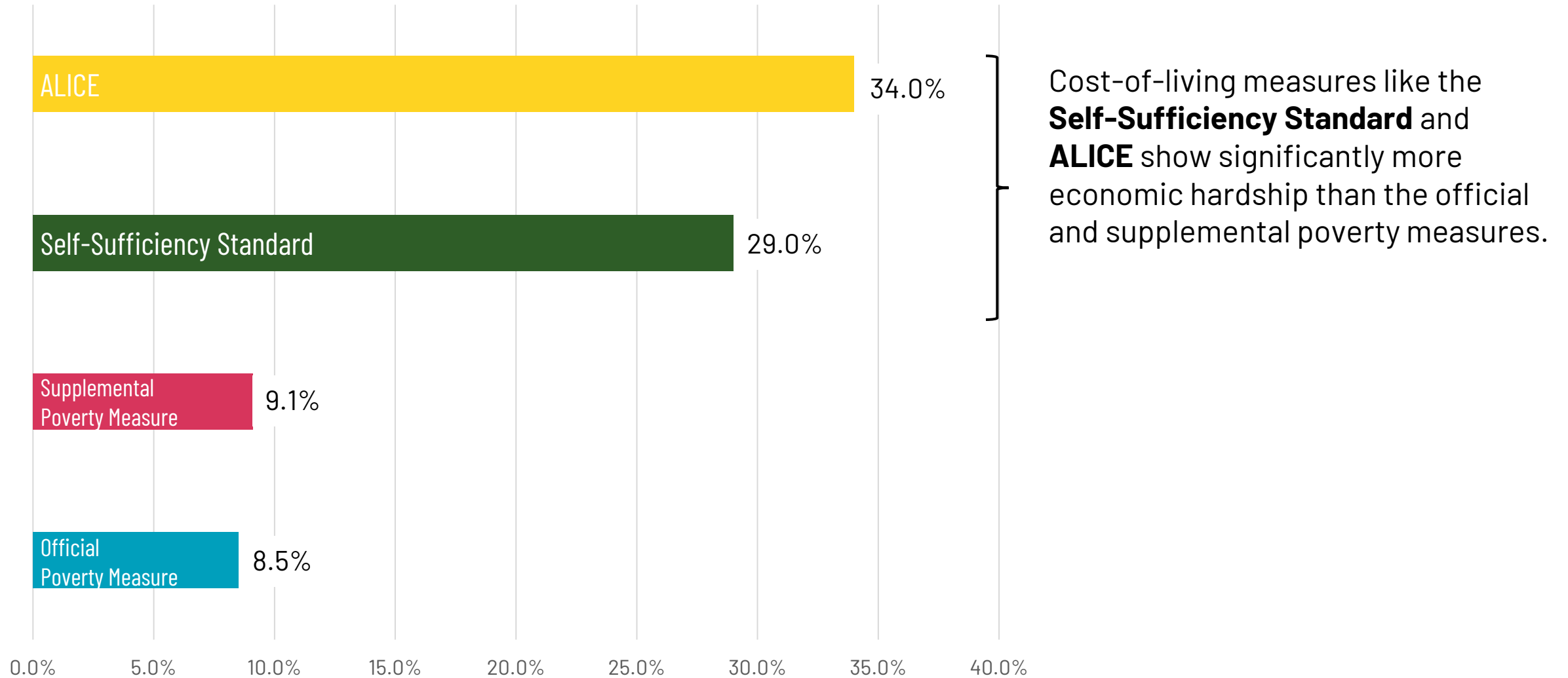


**NATIONAL BEST PRACTICE**



**GAPS STARTING TO CLOSE**

# Plenty of Poverty Above the Poverty Line





# Key Differences in Measures of Economic Hardship

ACCOUNTS FOR:		Official Poverty Measure (OPM)	Supplemental Poverty Measure (SPM)	Self-Sufficiency Standard (SS Standard)
Variations	Family size	✓	✓	✓
	Region		✓	✓
Resources	Pre-tax cash income	✓	✓	✓
	In-kind benefits, tax credits		✓	✓
Expenses	Food	✓	✓	✓
	Housing		✓	✓
	Clothing		✓	✓
	Utilities, Phone, Wi-Fi		✓	✓
	Transportation			✓
	Child Care			✓
	Health Care			✓
	Tax		✓	✓
	Emergency Savings			✓

# What People Are Saying

**"The less people worry about affording food or rent, the more they can focus on school, work and family."**

~Cami Feek,  
Commissioner,  
Employment Security  
Department

**"People experiencing poverty have the knowledge and expertise to guide the state toward a just and equitable future."**

~Drayton Jackson,  
Alliance Co-Chair

**"Economic justice is health justice."**

~Dr. Umair Shah  
Former Secretary,  
Department of Health

**"Poverty is a policy choice. We can end poverty in Washington and the 10-Year Plan is the way to do it."**

~Juanita Maestas,  
Emeritus Alliance  
Co-Chair

**"The collaboration with the Alliance has worked because it is anchored by a unifying purpose of honoring the lived experiences and expertise of frontline communities."**

~Faduma Fido,  
People's Economy Lab

**"Less poverty is an economic win for the state, the peace of mind economic stability gives families is priceless."**

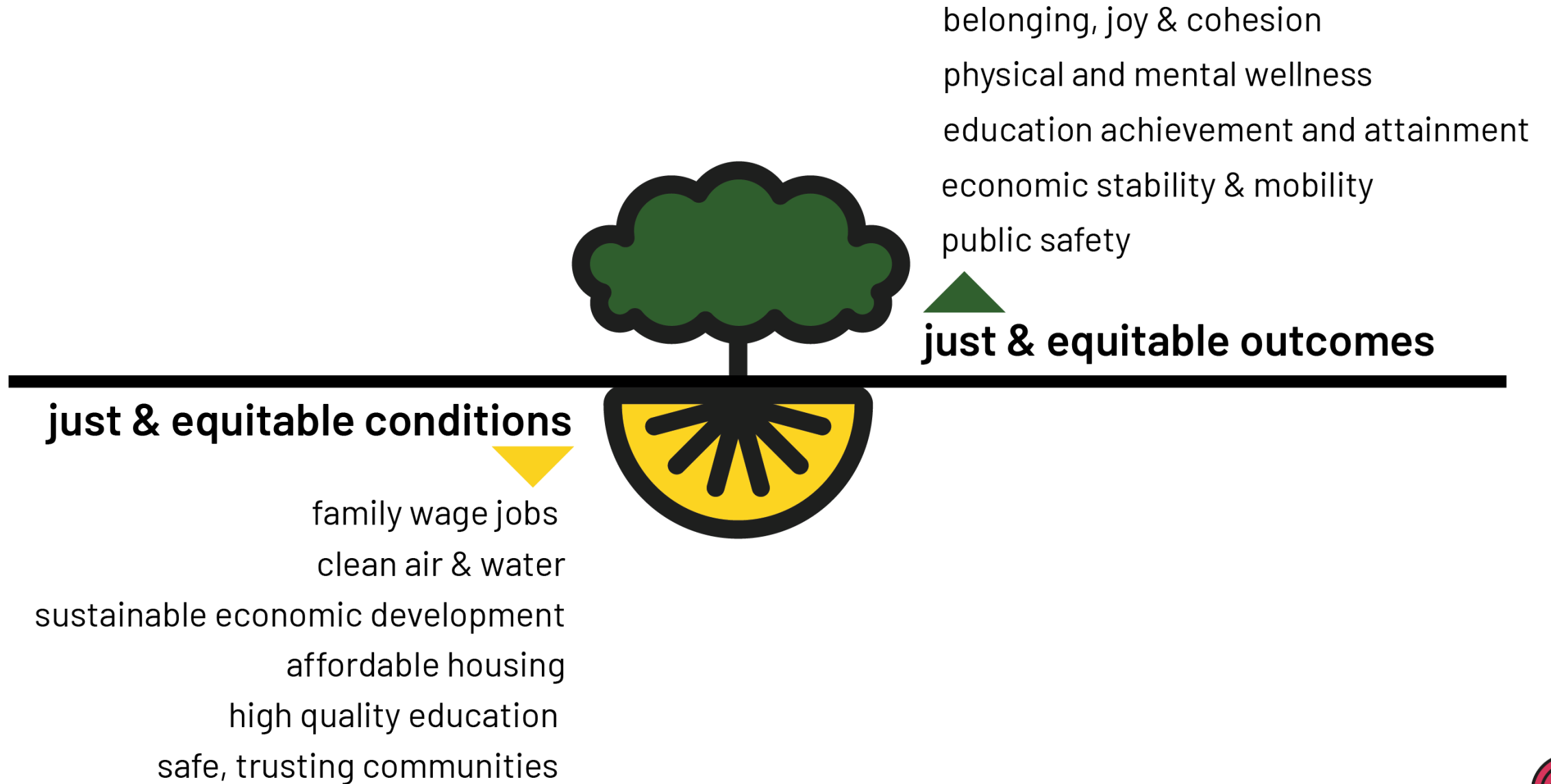
~Drew Shirk, Secretary  
Department of Revenue

**"The Alliance is absolutely mobilizing change because of how they have done their work."**

~Dona Ponepinto,  
President/CEO, United  
Way Pierce County



# What's in the Soil Bears the Fruit





# Just Futures

## Goal & Objectives of the Just Futures Project

### Goal

To define, measure and build accountability toward a just and equitable future in Washington.



### Objectives

Build a community-led vision and definition for what a just and equitable future means.

Create state accountability toward vision with a process to measure, track and publicize progress to decision makers.

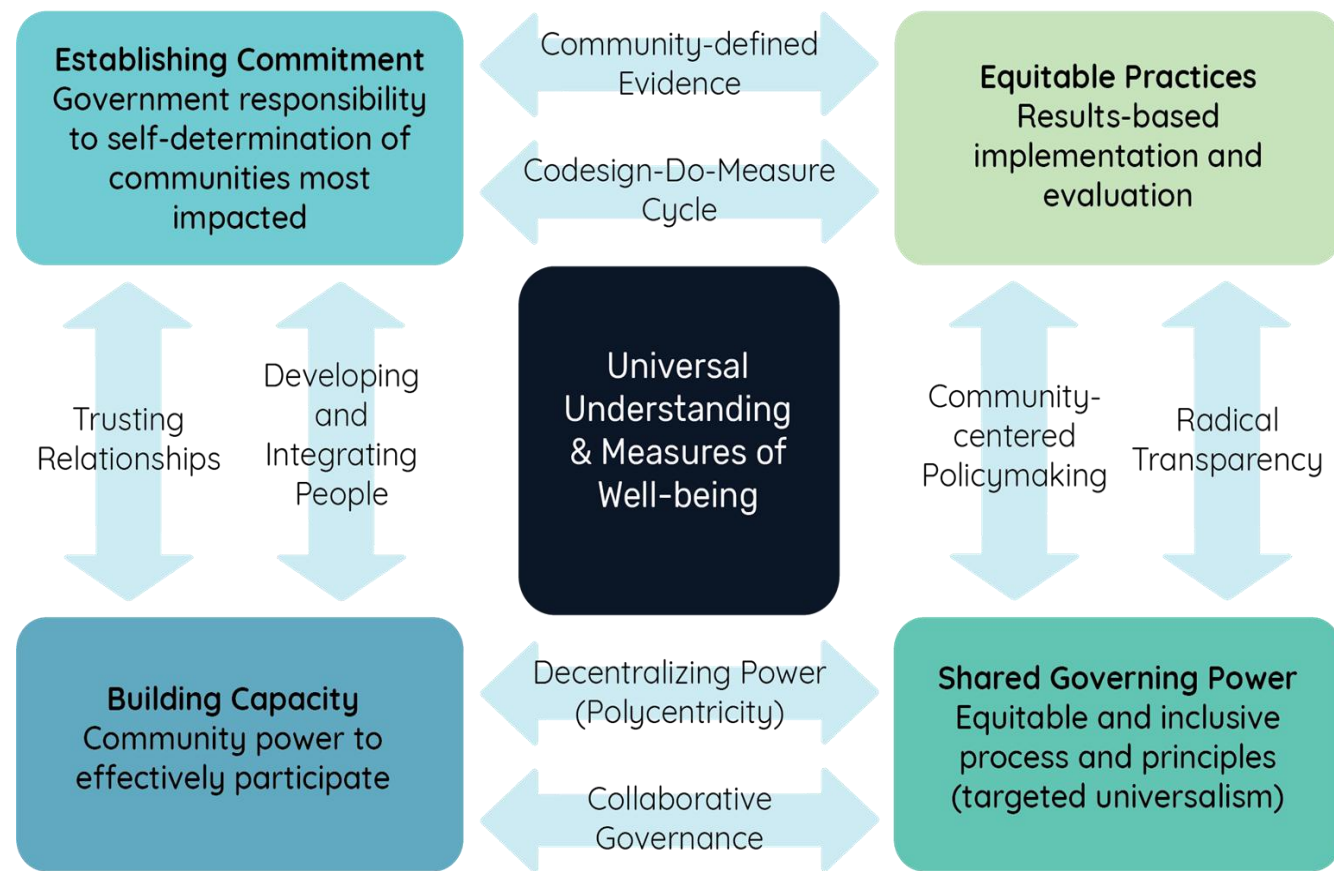
Ensure expertise and solutions of people and communities historically excluded from well-being are elevated in state budget and policy decisions.



## Cornerstones of Co-Governance for a Just and Equitable Future were created to:

- **Elevate leadership and participation of communities** most impacted and historically excluded in setting the vision, measures, assessing progress, and holding the state accountable.
- **Create opportunities for government agencies to collaborate with community owned enterprises** to direct targeted investments - where people most impacted are central to decision making.

## Cornerstones of Co-Governance for a Just and Equitable Future



# Approach : Alignment between Environmental Justice & Poverty

## Environmental Justice

- WA State Environmental Justice Council
- HEAL Act

## Poverty Reduction

- Blueprint for a Just & Equitable Washington: The 10-Year Plan to Reduce Poverty and Inequality
- Subcabinet on Intergenerational Poverty

1. Center lived expertise – those who stand to benefit the most from the programs, policies, budgets are at the tables
2. Similar CBOs and community members at each of our tables
3. Create consistent and accessible pathways for community to be meaningfully involved in government decision-making processes
4. Philanthropic dollars have helped us innovate to get to impact

\*Sources:

WA State [Blueprint for a Just & Equitable Washington](#)

WA State [Environmental Justice Task Force Final Report](#)

WA State [HEAL Act](#)

WA State [Executive Order 22-04 Implementing the WA State PEAR Plan and Playbook](#)





# Briefing of Well-Being Efforts

## Global and National work on wellbeing economies

- ❖ Movement to measure the economy by looking at the quality of peoples' lives and the quality of the environment (climate, water, pollution, etc.)
- ❖ Movement from GDP (gross domestic product) that measures the size of a nation or state's economy to well-being to combine economic prosperity and societal well-being.

UN Human Rights Council wants this to be an imperative (July 2024)

"For decades, GDP growth was the dominant approach for eradicating poverty, but it never fulfilled its promise and devastated our planet."  
- Oliver de Schutter, UN Special Rapporteur  
July 2, 2024

OECD Secretary General said we need to put people at the center, not the economy (2019)

### Well-being Economy Alliance and the Well-being Economy Governments

- Scotland
- Wales
- Iceland
- Wales
- Finland

### Dashboards

1. Scottish Gov't Wellbeing Economy Monitor
2. New Zealand's Living Standards Framework
3. Canada Index of Wellbeing
4. WIN – Well-Being in the Nation (U.S.)
5. Social Progress Index from a London Borough
6. Think TN

The World Health Organization (WHO) has a Healthy Lives and Well-being for All strategy and reports on what happened and didn't happen.

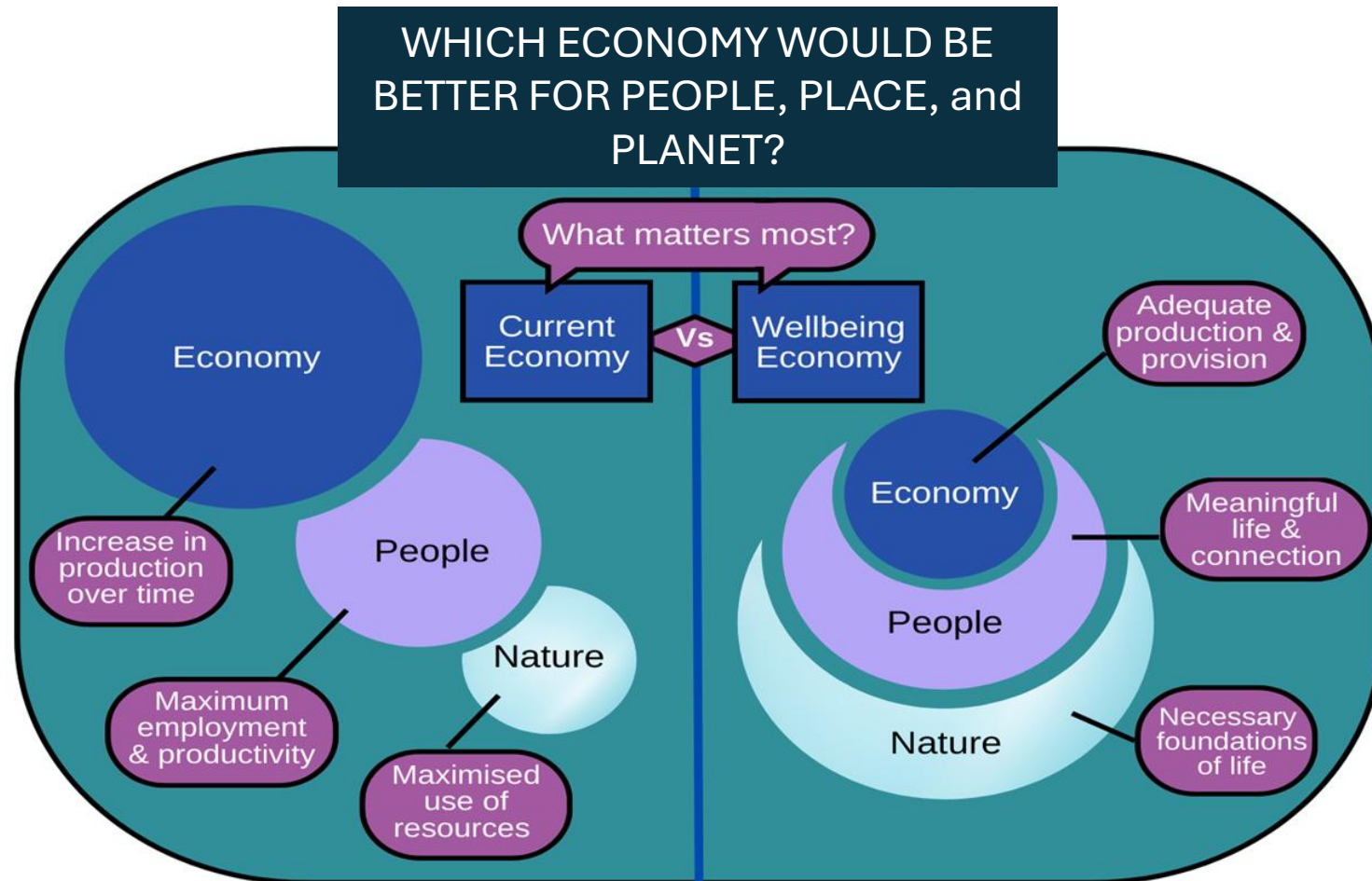
### SYSTEMS WORK in US

- Aina Aloha Futures
- WELLO in Wisconsin
- Native Roots Network in northern Cal. With cultural relevant Indigenous practices

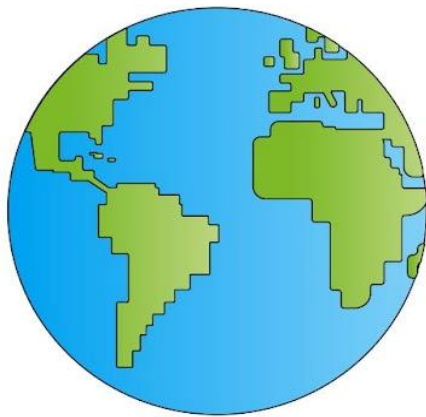
# The Wellbeing Economy Movement

People and planet not here to  
serve the economy

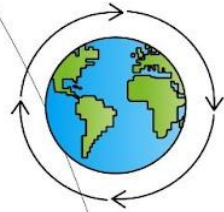
The economy is here to serve  
us!



# Wellbeing Economy “Picnic Blanket”



**WELLBEING  
ECONOMY**  
ALLIANCE



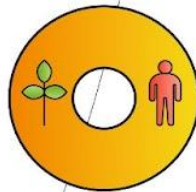
## **CIRCULAR ECONOMY**

Transform production and consumption processes to reuse resources, design waste and pollution out of the cycle, and regenerate the natural world. The primary ways to do this are recycling waste for new production or using waste for conversion to energy.



## **ECONOMIC DEMOCRACY**

Ensures equitable distributions of economic power through democratic management of economy via policy, social enterprises, and community wealth management.



## **DOUGHNUT ECONOMICS**

Supports the design of economic systems that ensure necessary social foundations, while respecting planetary limits.



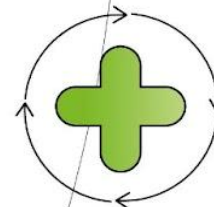
## **COMMUNITY WEALTH BUILDING**

Identifies 'anchor' economic institutions with strong linkages to the local economy, to foster 'bottom-up' and inclusive development.



## **COMMON GOOD ECONOMY**

Evaluates business success not by profits, but rather by their contribution to the 'common good' and alignment with values of Dignity, Social Justice, Environmental Sustainability, and Transparency.



## **CORE ECONOMY**

Recognises central importance of economic activities that occur amongst families, friends, and communities, which are non-monetised and driven by values of love, empathy, responsibility, and care.



## **REGENERATIVE ECONOMY**

Focuses on building an economy that mimics nature by regenerating the social and ecological assets needed for wellbeing.



## **SOLIDARITY ECONOMY**

Promotes the expansion of economic activities and behaviours that are based on principles of reciprocity, cooperation, and solidarity.



## **FOUNDATIONAL ECONOMY**

Advocates for the use of public policy to secure the supply of basic goods and services to all people in a sustainable manner (e.g. socially and environmentally responsible).



# Frameworks to align

What are your thoughts?

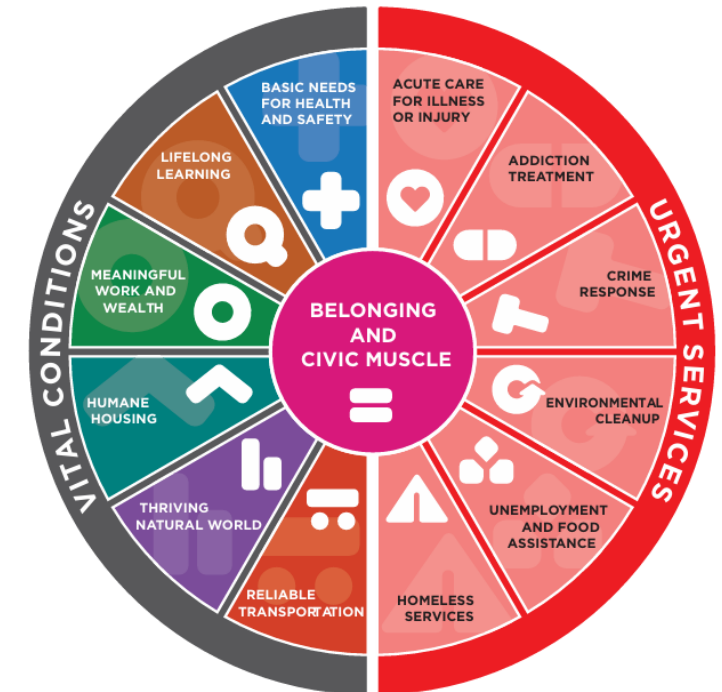
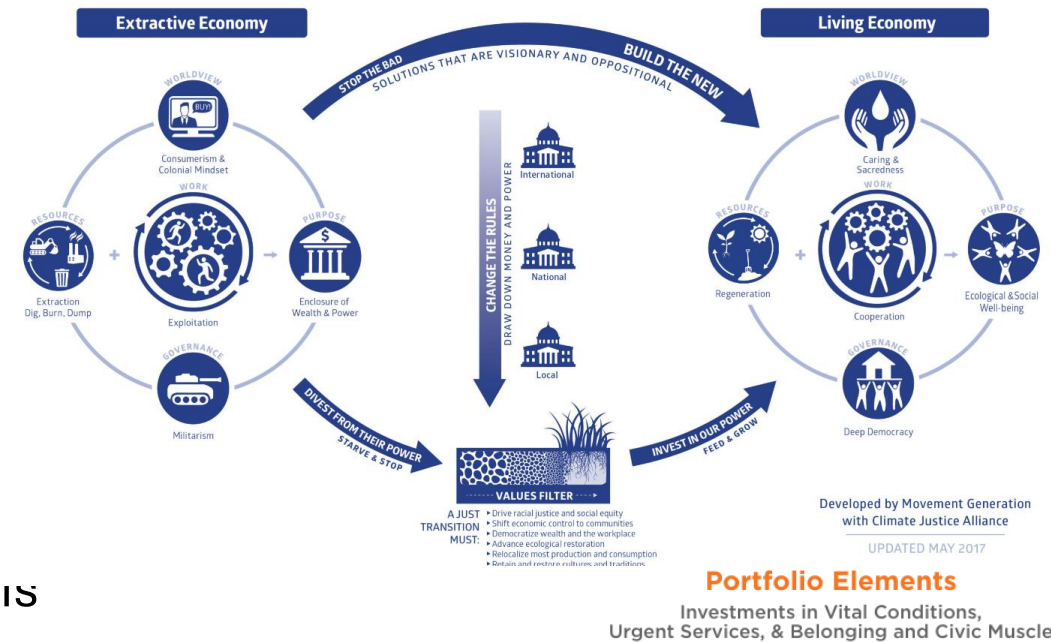
❖ Just Transition – Environmental Justice partners

❖ Vital Conditions – Poverty Reduction partners

- Previous presidential administration used this (Trump, Biden)

There hasn't been a crosswalk of both of these frameworks. Should there be just one or should we continue to have separate frameworks?

## A STRATEGY FRAMEWORK FOR JUST TRANSITION



# Alignment with Well-Being Work Internationally, Nationally & in WA

Opportunities in 2025?

- ❖ Movement to measure the economy by looking at the quality of peoples' lives and the quality of the environment (climate, water, pollution, etc.)
- ❖ Narrative build
  - What's the current WA narrative and what's the narrative we aspire toward
- ❖ Iterating on the 10-Year Plan
- ❖ Collaborative partnerships with the efforts (see prior slide).
  - Community
  - Learning
  - Policy
- ❖ Convenings
- ❖ Future Generations Bill and partnership with Wales?
- ❖ Socialization with new state leadership, new partners, etc.

## Community Collaborative

- YOU are the leaders this state and this country needs
- Creating new systems to improve people, place and planet are key!
- Relationships AND process are critical
- Ability to work with others
- Passion, passion, passion
- Learning mindset

## Discussion

We are constantly iterating.

**As we evolve and respond to emergent themes and needs, what are your recommendations for Washington state government agencies and collaboration within agencies?**

**How can our data dashboard be useful for you?**

**The federal and state environments have changed. What iterations do you recommend for the plan so we can work collectively to track progress-to-date on short- and long-term needs of Washington?**

**There is no perfect group. Who else do you recommend we engage with as we continue to evolve and course correct based on learnings?**





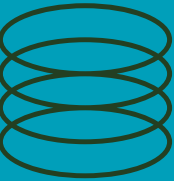
# Thank you!

**LINDSAY MORGAN TRACY**

Innovator-in-Chief  
[lindsay.tracy@dshs.wa.gov](mailto:lindsay.tracy@dshs.wa.gov)

(Yes, three first names, three last names and  
three unisex names)

[www.waeconomicjusticealliance.com](http://www.waeconomicjusticealliance.com)



# Breakout Questions

- What recommendations do you have for government agencies to better collaborate?
- What adjustments should we make to ensure we're collectively tracking progress and meeting Washington's evolving short- and long-term needs?
- Any other insights or ideas you'd like to share?