

2025-2026 Professional Training & Education Series



What is this program?

The Medicare Rural Hospital Flexibility (Flex) Program at the Washington State Department of Health has provided funding for staff at WA critical access hospitals (CAH) to continue their professional development. We partner with the Washington State Hospital Association (WSHA) to manage this program. This partnership allows us to offer a wide variety of certification and education opportunities to foster a high performing efficient delivery system.

ELIGIBILITY REQUIREMENTS

- » Participants must be a staff member at a CAH in Washington state.
- » Obtain supervisor/manager support or approval before participating.
- » Understand eligibility requirements and qualifications for full certification in the program they are applying for.
- » Respond to quarterly program check-ins with Program Manager.
- » Commit to studying the material.
- » Seek support as appropriate from WSHA and the Certifying Vendor.
- » Complete the requirements and take the exam (as applicable)



PROGRAM REGISTRATION



Danielle Kunkel DHSc MPH

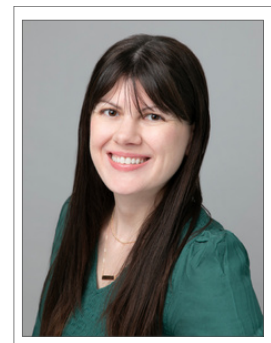
Rural Health Systems
Quality Program Manager
Washington State Department of Health
Danielle.Kunkel@doh.wa.gov

Visit the registration website :
[WSHA DASHBOARD](#)

HOW TO REGISTER

Review the key enrollment information for the program you are interested in.

If you meet the program requirements, apply for funding through the dashboard site.



Megan Herman MA CPHQ

Director, Clinical Excellence
Washington State Hospital Association
MeganH@wsha.org

2025-2026 Professional Training & Education Series



AVAILABLE PROGRAMS

The goal of this program is to meet the continuing education needs of our critical access hospitals to the extent that funding will allow. Program offerings are reviewed annually for relevancy and the potential expansion of topics.

- » [Certified Professional of Healthcare Quality \(CPHQ\)](#) - This certification is a credential that signifies both professional and academic achievement for those who have a career in patient safety and healthcare quality.
- » [Certified Professional in Healthcare Risk Management \(CPHRM\)](#) - A CPHRM is a qualified professional that is responsible for performing inspections, enforcing health and safety regulations to minimize potential risk factors impacting patients or staff.
- » [Certified Professional in Patient Safety \(CPPS\)](#) - CPPS is earned by professionals who have demonstrated a high level of proficiency in the core standards of patient safety - Culture, Leadership, Patient Safety Risks and Solutions, Measuring and Improving Performance, Systems Thinking and Design / Human Factors.
- » [Certified Diabetes Care & Education Specialist \(CDCES\)](#) - The certification ensures you possess the knowledge necessary to deliver high quality diabetes care and education.
- » [Certification in Infection Control \(CIC\)](#) - this credential is for professionals who have competence in the practice of infection prevention and control and healthcare epidemiology, and is intended for individuals who are actively accountable for the infection prevention and control program within their current position.
- » Certification in Healthcare Quality Principles
- » Project Management Training
- » Perinatal Quality Education
- » Sexual Assault Nurse Examiner
- » Certified Professional of Human Factors in Healthcare
- » Other quality education considered upon request

Please explore the WSHA program [Dashboard](#) or contact us directly for more information.